

Construction & Operational Readiness Report

AC Transit Board Meeting

July 22, 2020

Handrail and Art Panel Installations



Remaining Activities To Start Passenger Service

Station Platforms - Civil:

- ✓ Construct safety curb on 23 curbside platforms (ON-GOING)
- ✓ Punchlist Corrective actions (ON-GOING)
- ✓ Handrails & Art (ON-GOING)
- ✓ Miscellaneous Change order work (ON-GOING)
- ✓ Signage

Station Platforms - Systems:

- ✓ Site Acceptance testing - CCTVs, PA speakers, Electronic Message signs, TVMs, Clipper Card Readers (ON-GOING)

Northern Layover Facility:

- ✓ Operator Restroom (In Progress)

Station Platform Tour

San Leandro Transit Center



Downtown San Leandro NB



Downtown San Leandro SB



San Leandro Civic Center NB



San Leandro Civic Center SB



Georgia Way NB



Remaining Activities To Start Passenger Service

Fiber optic communications network:

- ✓ Terminate to City of Oakland Traffic center
- ✓ Terminate to Caltrans Traffic center

Traffic Signal Priority (TSP) Timing and Signal Coordination:

- ✓ Segment A (In Progress)
- ✓ Segment B (In Progress)

All 27 Tempo Buses outfitted with Brand Wrap, CAD/AVL, APCs and Carey Fingers. (In Progress)

Temporary Uptown NB Station Platform by Developer (In Progress)

Turnover Corridor from BRT to Right-of-Way Authority:

- ✓ Segment A - Caltrans (In Progress)
- ✓ Segment B - City of Oakland (In Progress)

Station Platform Tour

Georgia Way SB



Durant Avenue



103rd Avenue



98th Avenue



95th Avenue



90th Avenue



The map displays 15 zones along the San Leandro Transit Center project. Each zone is represented by a colored circle indicating its status: orange for 'Under Construction', green for 'Substantially Complete', yellow for 'PGE Power or Relocation', and red for 'PGE Signal Power'. The zones are labeled with their names and completion percentages: Zone 1 (100%), Zone 2 (100%), Zone 3 (100%), Zone 4 (100%), Zone 5 (100%), Zone 6 (99%), Zone 7 (100%), Zone 8 (100%), Zone 9 (100%), Zone 10 (100%), Zone 11 (100%), Zone 12 (100%), Zone 13 (100%), Zone 14 (100%), and Zone 15 (100%). A purple diagonal line labeled 'Operator Training Corridor Wide' runs through the map. A legend box titled 'PlatformStatus' is located in the bottom left corner. A list of 'Remaining Major Tasks' is on the right, including 'Communications', 'Punchlist Completion', 'Operator Training', 'Signal System', and 'Right Of Way'. The map also shows the 'City of Oakland' and 'Caltrans SR 18'.

PlatformStatus

- Under Construction
- Substantially Complete
- PGE Power or Relocation
- PGE Signal Power

Remaining Major Tasks

- Communications
- Punchlist Completion
- Operator Training
- Signal System
- Right Of Way

City of Oakland

Caltrans SR 18

Operator Training Corridor Wide

San Leandro Transit Center

Zone 1 (100%)

Zone 2 (100%)

Zone 3 (100%)

Zone 4 (100%)

Zone 5 (100%)

Zone 6 (99%)

Zone 7 (100%)

Zone 8 (100%)

Zone 9 (100%)

Zone 10 (100%)

Zone 11 (100%)

Zone 12 (100%)

Zone 13 (100%)

Zone 14 (100%)

Zone 15 (100%)

Temp Platform Zone-X (95%)

Zone 16 (100%)

Northern Layover Facility

City Center

Harrison

Madison

5th Ave

10th Ave

14th Ave

20th Ave

24th Ave

28th Ave

31st Ave

Fruitvale

39th Ave

High Street

48th Ave

54th Ave

Seminary

63rd Ave

67th Ave

73rd Ave

77th Ave

82nd Ave

86th Ave

90th Ave

95th Ave

98th Ave

103rd Ave

Durant Ave

Georgia Way

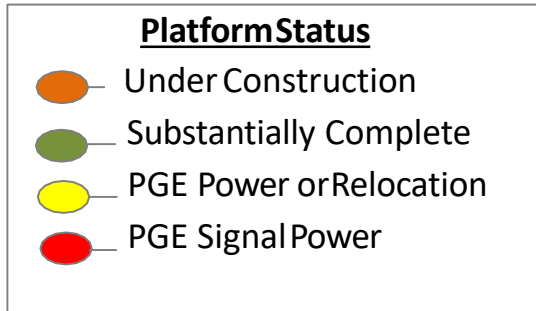
San Leandro Civic Center

Downtown San Leandro

- ✓ **Communications Systems Testing**
- ✓ **Punchlist Corrections**
- ✓ **Operator Training**
- ✓ **Signal Systems Optimization**
- ✓ **Right Of Way Transfer**

City of Oakland

Caltrans SR 185



Station Platform Tour

86th Avenue



82nd Avenue



77th Avenue



73rd Avenue



67th Avenue



63rd Avenue



Major Risks to Service Opening August 9, 2020

- ✓ Temporary Platform construction by the Tower Group Developer
- ✓ Readiness certification by FTA (11-week review period started June 1, 2020)
- ✓ Acceptance of the signal and civil improvements by Right-of-way authorities. (Oakland and Caltrans)
- ✓ Accidental Cuts into Fiber Optic Cable Network

Station Platform Tour

Seminary Avenue



54th Avenue



48th Avenue



High Street



39th Avenue



Fruitvale Avenue



FTA OP54 Requirements for Passenger Service – August 2020

- ✓ All Paving (complete)
- ✓ All curb ramps (complete)
- ✓ New Traffic and pedestrian signals – (complete)
- ✓ Station architecture – (complete)
- ✓ Northern Layover and San Leandro Transit Center facilities (complete)
- ✓ County Sheriffs (deployed)
- ✓ Passenger amenities installed and functional (complete)
- ✓ Traffic Signal Priority Timing and Signal coordination (in progress)
- ✓ Fiber optic network (complete)

Station Platform Tour

31st AVE



28th AVE



24th AVE



20th AVE



NB 14th AVE



SB 14th AVE



Project Management and Construction Budgets

Service Type	Vendor	Contract Value	Paid to Date	Remaining	Pct. Expended
BP3 Construction Contractor	O.C. JONES & SONS, INC.	\$119,029,305	\$108,921,594	\$10,107,711	92%
Design Services During Construction	PARSONS TRANSPORTATION GROUP	\$10,516,333	\$8,295,591	\$2,220,742	79%
Construction Project Management	WSP Inc.	\$9,831,606	\$8,151,203	\$1,680,403	83%
Public Outreach Services	L. LUSTER & ASSOCIATES, INC.	\$1,993,691	\$1,385,087	\$608,604	69%
Traffic Coordination Services	Diablo Engineering	\$715,556	\$628,693	\$86,863	88%
BRT Lead Artist	Johanna Poethig Group	\$1,724,024	\$1,575,793	\$148,231	91%

Station Platform Tour

NB 10th Avenue



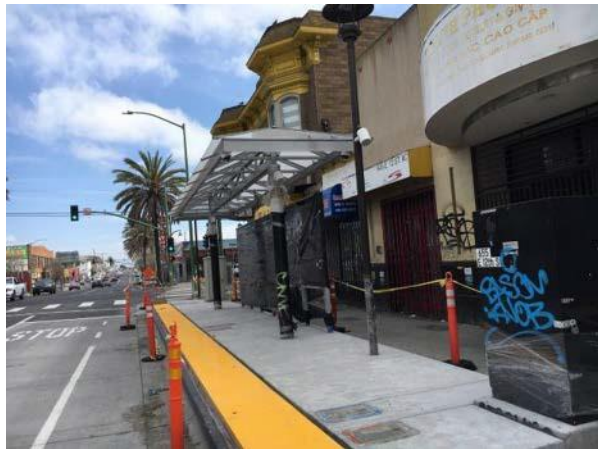
SB 10th Avenue



NB 5th Avenue



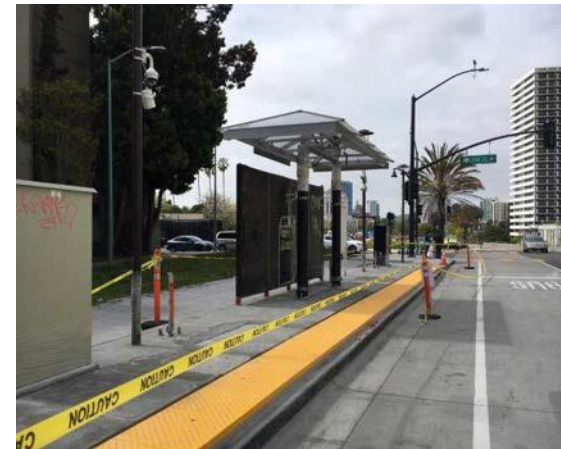
SB 5th Avenue



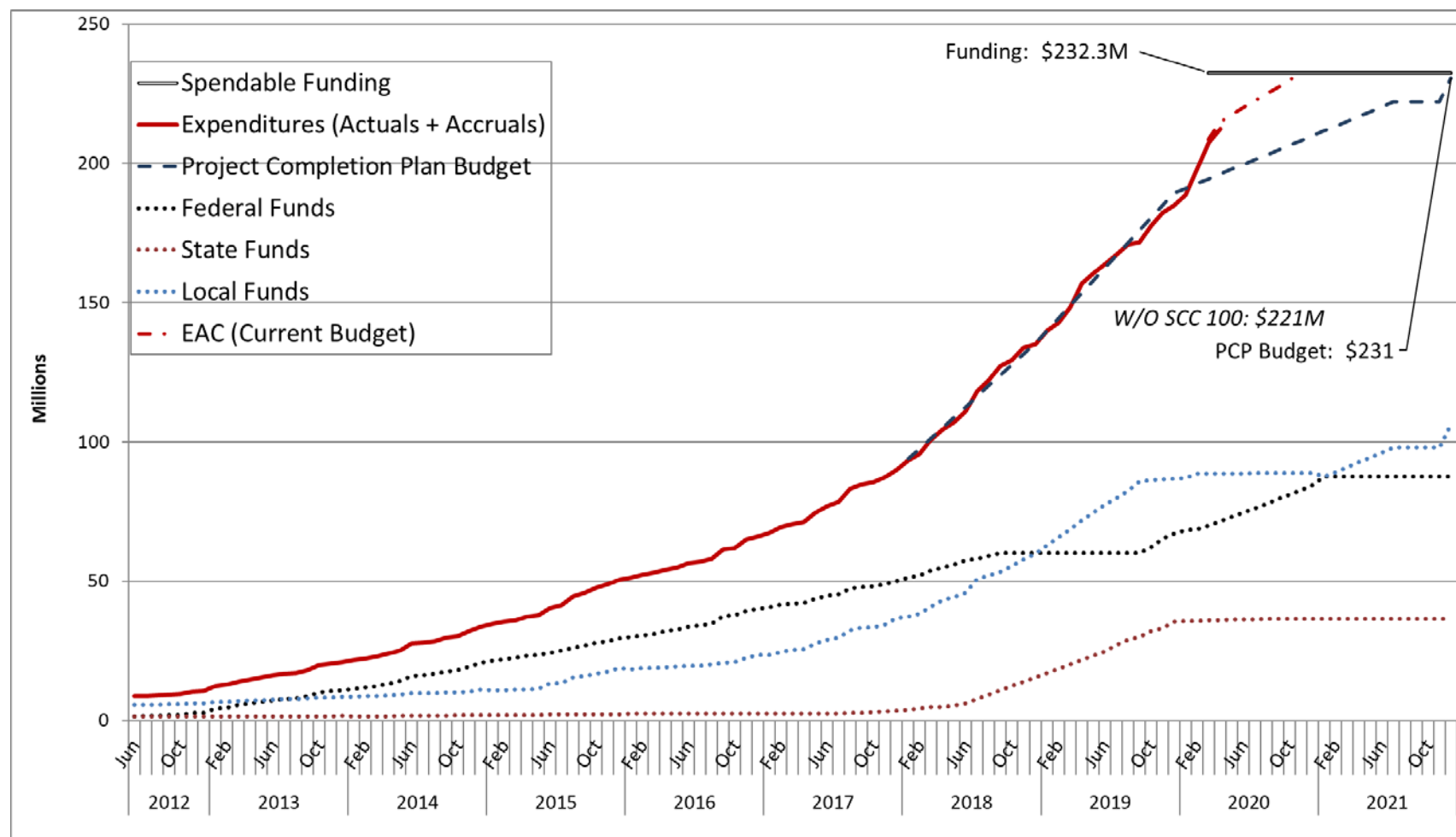
NB 2nd Avenue



SB 2nd Avenue



Expenditure Rate Toward Program Budget



Station Platform Tour

NB Madison Street



SB Madison Street



NB Harrison Street



SB Harrison Street



NB City Center



SB City Center



Operator Training and Sign-Up

- ✓ Operator training started in September 2019. Operator training throughout the corridor will continue until we transition to “live” customer service. All Division 4 operators that select a Tempo route for the fall sign-up, will be also trained before the start of service. To date over 80 operators have been trained with more in the pipeline.
- ✓ BRT Platform Agents began training on June 15th, 2020 and it will continue until August 7th, 2020.
- ✓ In collaboration with ATU Local 192, there will be continuous communication after the sign-up on July 17th, 2020, followed by an Instructional Bulletin issued to the Operators explaining the transition from Line 1 to Line 1 Tempo.
- ✓ The Fall Sign-Up will go into effect on Sunday, August 9th, 2020.

Station Platform Tour

NB 14th Street / Broadway



SB 14th Street / Broadway



NB Uptown



SB Uptown



Community Outreach for Passenger Service

- Opening the Bus Only Lanes ✓
- Platform Agent Training ✓
- Forward Facing Cameras ✓
- Tempo Rollout ✓
- Tempo Safety Campaign to Non-Riders
- Continued Outreach for Punch List Items
- Moving Buses from Franklin to Broadway
- Ribbon Cutting / Grand Opening



Community Outreach Post-Launch

Sustained community engagement to share rider info, answer questions, and resolve any issues.

SAT
AUG
1

ACTIVE
ENFORCEMENT

TOW-AWAY ZONE



NO PARKING

**DO NOT
PARK IN
BUS ONLY
LANE**

\$110 VIOLATION

- **Starting Saturday, August 1st**, cameras mounted on AC Transit Tempo buses will be used to assist no-parking enforcement in the BUS ONLY lane.
- The cameras will be used to issue parking tickets to any vehicle, **including delivery trucks**, illegally parked in the BUS ONLY lane.
- The fine for parking inside the BUS ONLY lane is \$110. Registered owners of illegally parked vehicles will receive a \$110 ticket in the mail.
- The painted BUS ONLY lane may only be used by Tempo buses and emergency vehicles. Motorists driving in the BUS ONLY lanes are also subject to citation and fine.

TEMPO
AC TRANSIT

For more information
call (510) 891-5478.

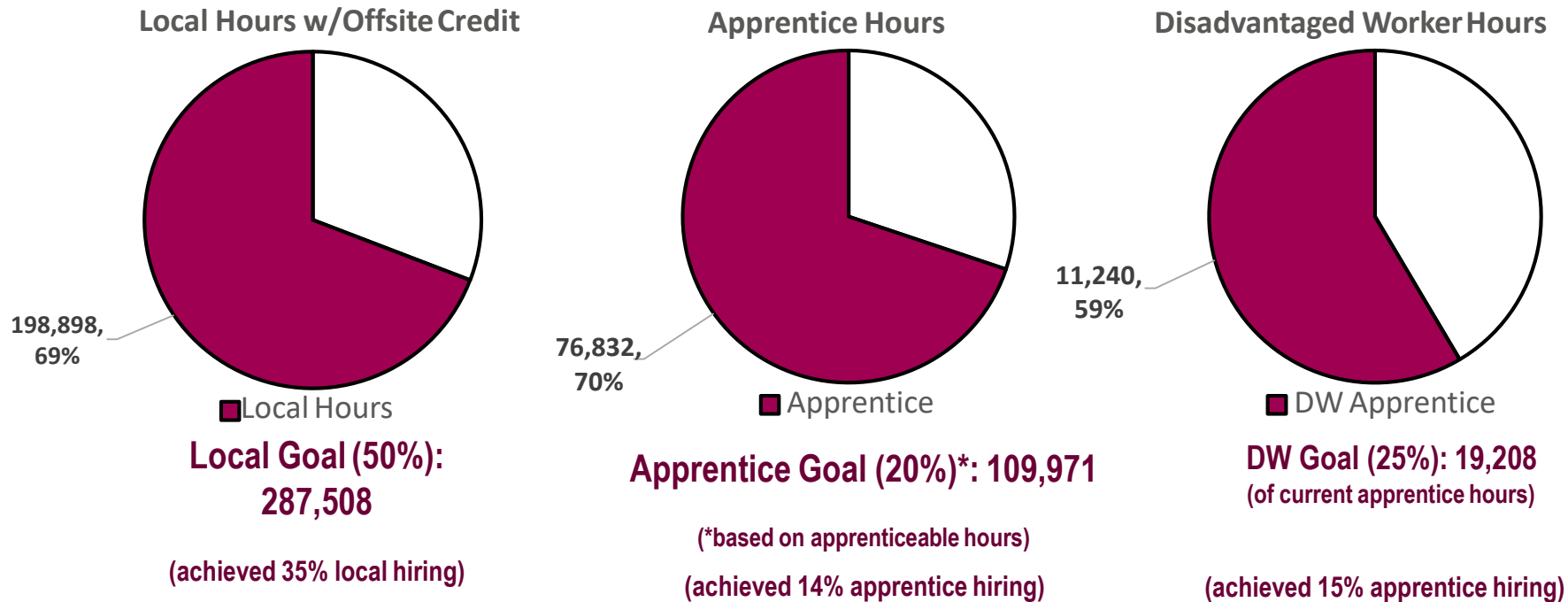
Northern Layover Facility - Complete

Operator rest room facility to be installed on Caltrans property adjacent to the layover stalls.



Project Labor Agreement / Construction Careers Policy (PLA/CCP) Workforce Utilization Thru 4-30-2020

Total Project Labor Hours for Reporting Period: 575,016



TVM and Clipper Card Reader Installation



Jurisdiction Hours/ DBE Utilization

Oakland – San Leandro Residents' Hours

JURISDICTION	No. Of Workers	WORK HOURS	PERCENTAGE OF LOCAL
Oakland	142	153,524	83%
San Leandro	38	32,129	17%

BRT Bid Package III DBE Utilization

Contract Type	DBE Payments	DBE Payment Percentage	Project DBE Goal	Number of DBE Subcontractors
Construction Contract	\$12.2M	10.65%	8%	14
Professional Services	\$8.3M	Various	Various	14

Data through 4/30/2020 as of 5/15/2020

See you at the Grand Opening!

