

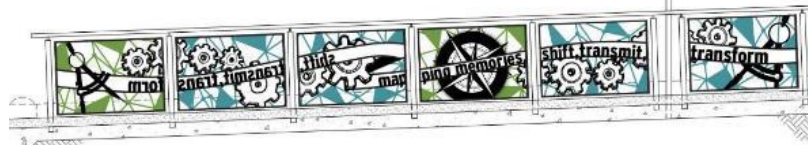
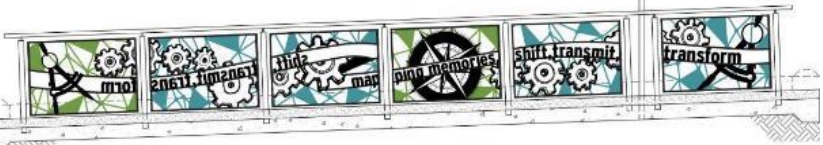


SR 19-030
Attachment 1

East Bay BRT Project Monthly Progress Report

January 23, 2019

18 BRT Platforms Now in Place!



Project Alignment 18 BRT Platforms - Interim Condition!

City of
Oakland

- Zone 1 (Not Started) — 20th Street
- Zone 2 (Not Started) — 14th Street
- Zone 3 (20%) — City Center
- Zone 4 (30%) — Harrison
- Zone 5 (25%) — Madison
- Zone 6 (28%) — 2nd Ave
- Zone 7 (Not started) — 5th Ave
- Zone 8 (100%) — 10th Ave
- Zone 9 (permitted) — 14th Ave
- Zone 10 (100%) — 20th Ave
- Zone 11 (100%) — 24th Ave
- Zone 12 (100%) — 28th Ave
- Zone 13 (100%) — 31st Ave
- Zone 14 (100%) — Fruitvale

**Total Project
56% Complete**

State
Highway 185
(CalTrans)

Station Areas

- Under Construction
- Interim Condition Status
- Utility Relocation Projects

- Zone 8 (100%) — High Street
- Zone 9 (permitted) — 48th Ave
- Zone 10 (100%) — 54th Ave
- Zone 11 (100%) — Seminary
- Zone 12 (100%) — 63rd Ave
- Zone 13 (100%) — 67th Ave
- Zone 14 (100%) — 73rd Ave
- Zone 15 (100%) — 77th Ave
- Zone 16 (100%) — 82nd Ave
- Zone 17 (100%) — 86th Ave
- Zone 18 (100%) — 90th Ave
- Zone 19 (100%) — 95th Ave
- Zone 20 (100%) — 98th Ave
- Zone 21 (100%) — 103rd Ave
- Zone 22 (100%) — Durant Ave
- Zone 23 (100%) — Georgia Way
- Zone 24 (100%) — San Leandro Civic Center
- Zone 25 (100%) — Downtown San Leandro



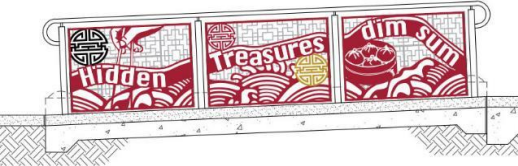
**Downtown Oakland to San Leandro
International Blvd to East 14th St**

Construction Progress by Activity

2018		November	December	
Zones Progress (14 Total)	Interim Status	6	6	
	In-Construction Status	5	5	
	Paving Status	4	4	
Platform Progress (46 Total)				
Platform Progress (46 Total)	Interim Status	18	18	
	In-Construction Status	0	0	
	Canopy Installation	0	0	
Signals & Lighting				
Signals & Lighting	Segment A	43%	70%	
	Segment B	2%	20%	
Communication Systems				
Communication Systems	Segment A	25%	27%	
	Segment B	2%	4%	
Polycarbonate Canopy (46 Total)				
Polycarbonate Canopy (46 Total)	Fabrication	60%	65%	
	Installation	0	0	
Artistic Enhancement (Handrails & Windscreens)				
Artistic Enhancement (Handrails & Windscreens)	Fabrication	85%	86%	
	Installation	0%	0%	
		Total	51%	56%

Segment A: 42nd Ave to San Leandro Transit Center

Segment B: 20th St @ Broadway to 42nd Ave

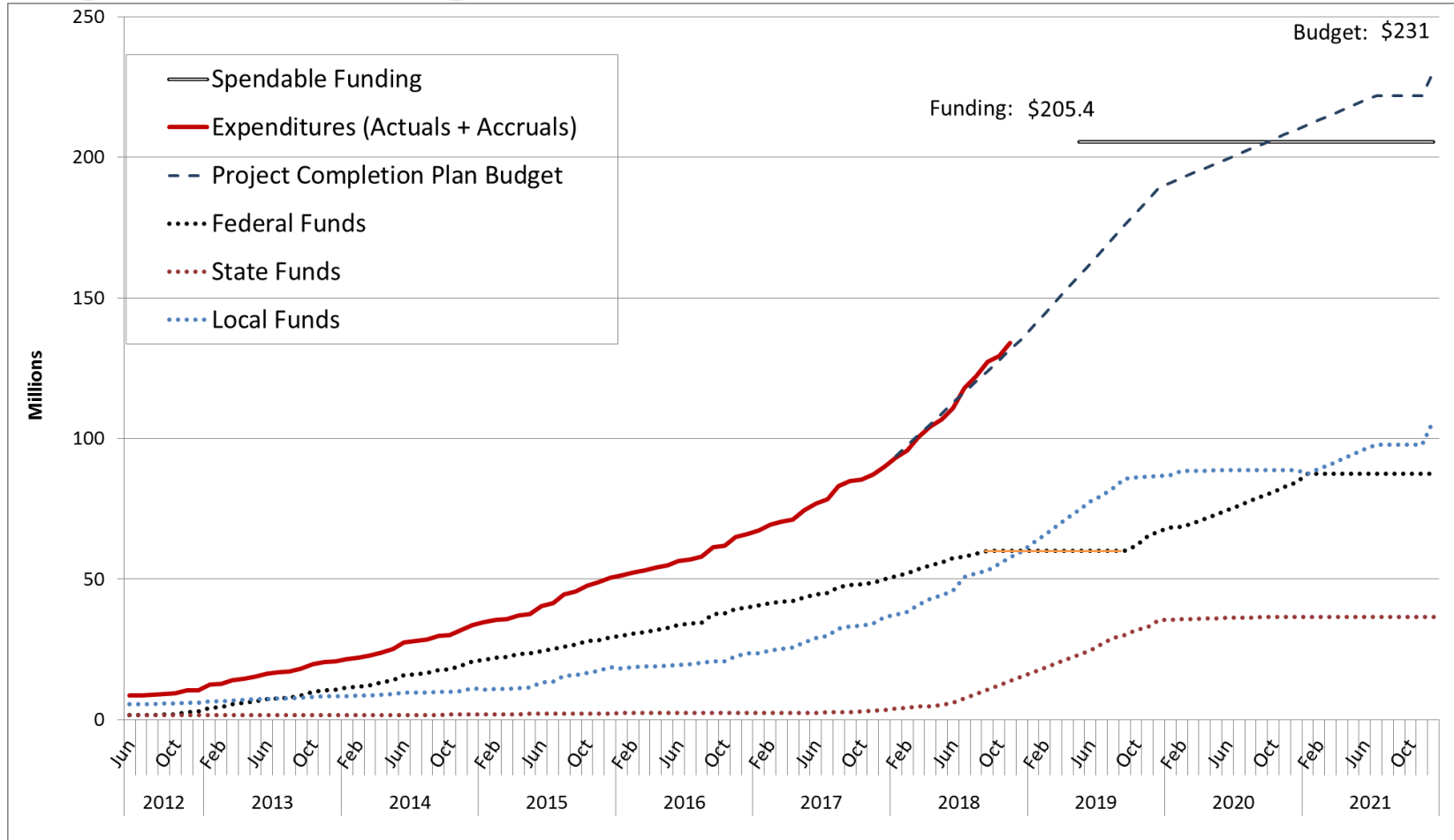


Project Management and Construction Budgets

Service Type	Vendor	Contract Value	Paid to Date	Remaining	Invoice Period
Construction Contractor	O.C. JONES & SONS, INC.	\$108,112,000	\$50,891,602	\$57,130,398	October
Design Services During Construction	PARSONS TRANSPORTATION GROUP	\$7,203,206	\$5,156,308	\$2,046,898	October
Construction Project Management	WSP INC	\$5,272,336	\$691,225	\$4,581,111	October
	CH2M HILL INC	\$6,791,823	\$5,401,681	\$1,390,142	September
Public Outreach Services	L. LUSTER & ASSOCIATES, INC.	\$1,521,624	\$1,486,490	\$35,134	October
		\$982,621	\$74,014	\$908,607	September

- OCJ contract will be amended as-needed to align with the projected revenue service date and project closeout.
- Construction Contractor budget through project completion.
- Design services contract budget through project completion.
- Notice To Proceed (NTP) for new CM and Outreach Contracts were issued on August 1, 2018

Project Funding



BRT Public Outreach



NOVEMBER 2018

Monthly Interactions	111
Accounts Interacted <i>(no duplicates)</i>	77
Types of Complaints:	
<i>Access</i>	2
<i>Construction Debris</i>	1
Total Complaints Received	3

DECEMBER 1 - 20, 2018

Monthly Interactions	101
Accounts Interacted <i>(no duplicates)</i>	66
Types of Complaints:	
<i>Access</i>	4
<i>Safety</i>	3
Total Complaints Received	7

December Outreach Events and Presentations

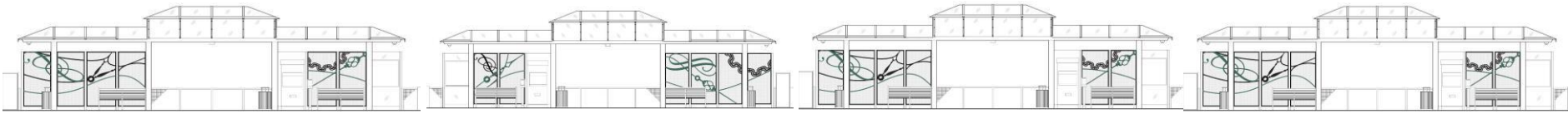
Project Updates

- | | |
|----------|---|
| 12/11/18 | Allen Temple Arms I & II Resident's Council Meeting |
| 12/15/18 | Family Bridges' 30 th Annual Christmas Senior Luncheon |

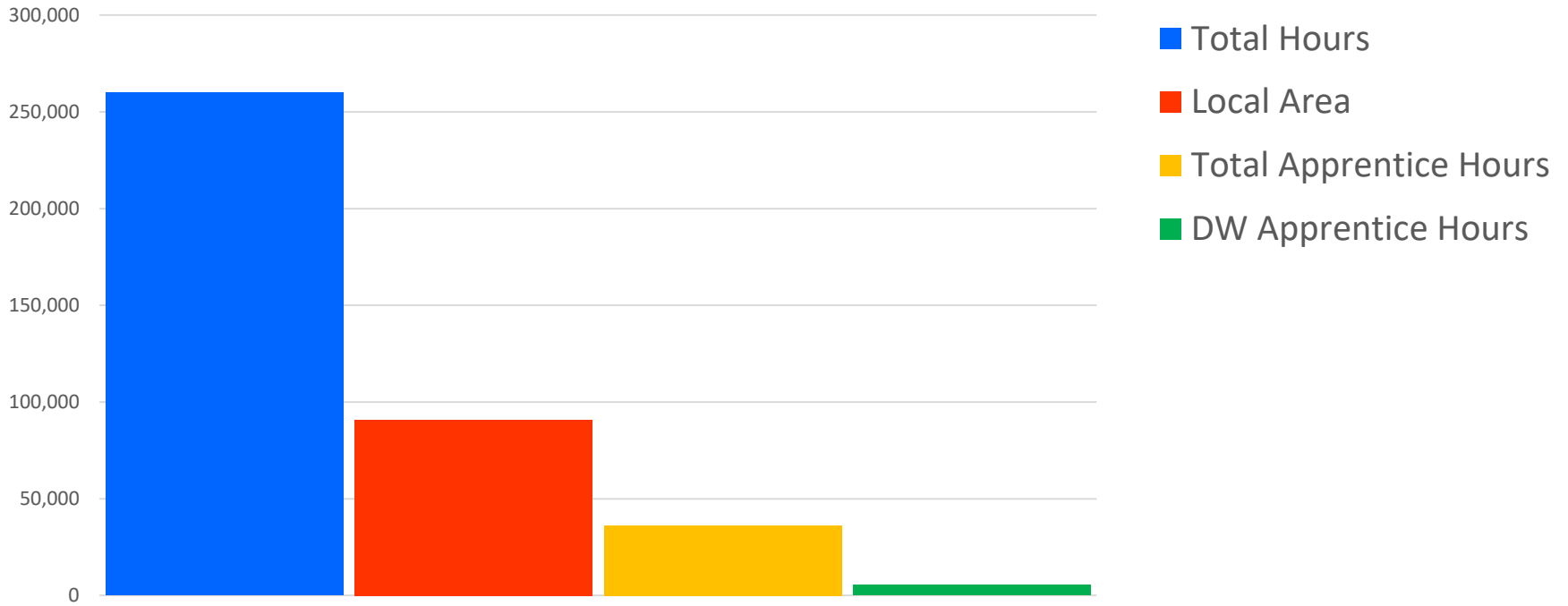
PLA/CCP-Focused Outreach

- | | |
|----------|---|
| 12/03/18 | Rising Sun Energy Center Mock Interviews |
| 12/13/18 | Cypress Mandela Training Center Pre-Apprentice Graduation |
| 12/14/18 | Rising Sun Energy Center Graduation |





Project Labor Agreement / Construction Careers Policy (PLA/CCP) Workforce Utilization Thru 11-30-18

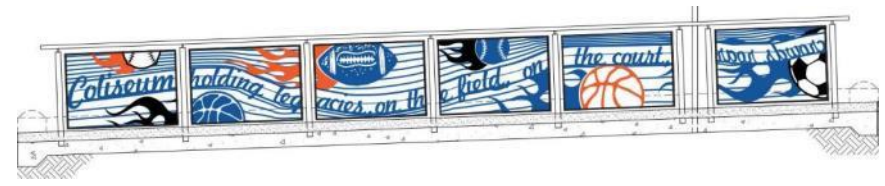
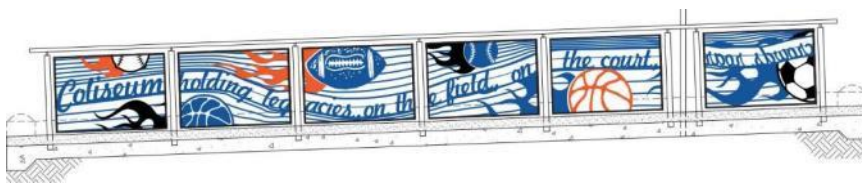


Total Project Hours: 259,947

Total Local Hire Work Hours: 90,764 (35%) [including offsite credit: 95,630 (36.8%)]

Total Apprentice Hours: 36,180 (14.5%)

Total Disadvantaged Worker Hours: 5,446.5 (15.05% of Apprentice Hours)



Oakland – San Leandro Residents’ Hours

JURISDICTION	No. Of Workers	WORK HOURS	PERCENTAGE OF LOCAL
Oakland	112	79,301	87%
San Leandro	23	11,463	13%

Data through 11/30/18 as of 12/17/18

BRT Bid Package III DBE Utilization

Contract Type	DBE Payments	DBE Payment Percentage	Project DBE Goal	Number of DBE Subcontractors
Construction Contract	\$4.62M	8.67%	8%	13
Professional Services	\$5.13M	Various	Various	21

Data through 11/30/18 as of 12/17/18