

Attachment 1

Chart 1 – Non-Revenue Vehicle Types

Row Labels	Count of Parent Equip
+ AUTO	51
- OTHER RUBBER TIRE VEHICLES	93
+ HEAVY DUTY TRUCK	4
+ MED DUTY TRUCK	5
+ SUV	25
+ TRUCK	31
+ VAN	28
Grand Total	144

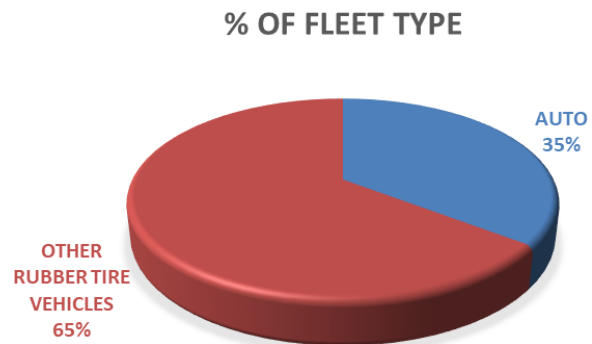


Chart 2 – Non-Revenue Vehicles Count by Year

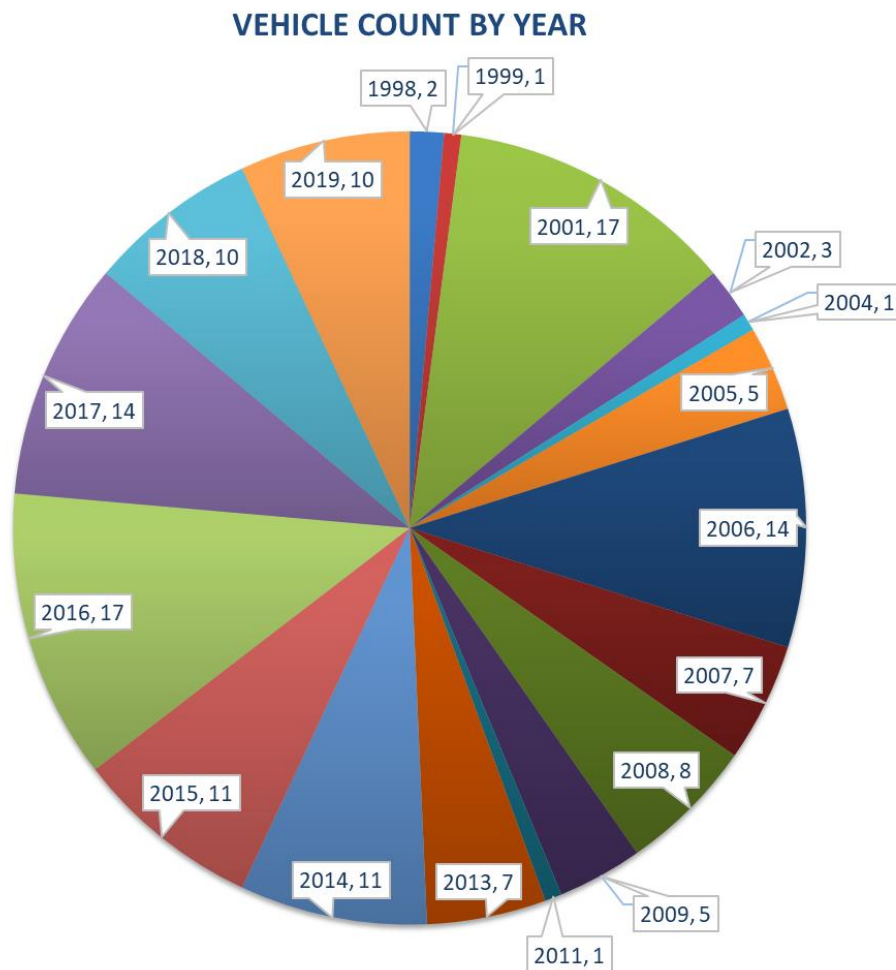


Chart 3 – Automobiles Exceeding ULB by Year

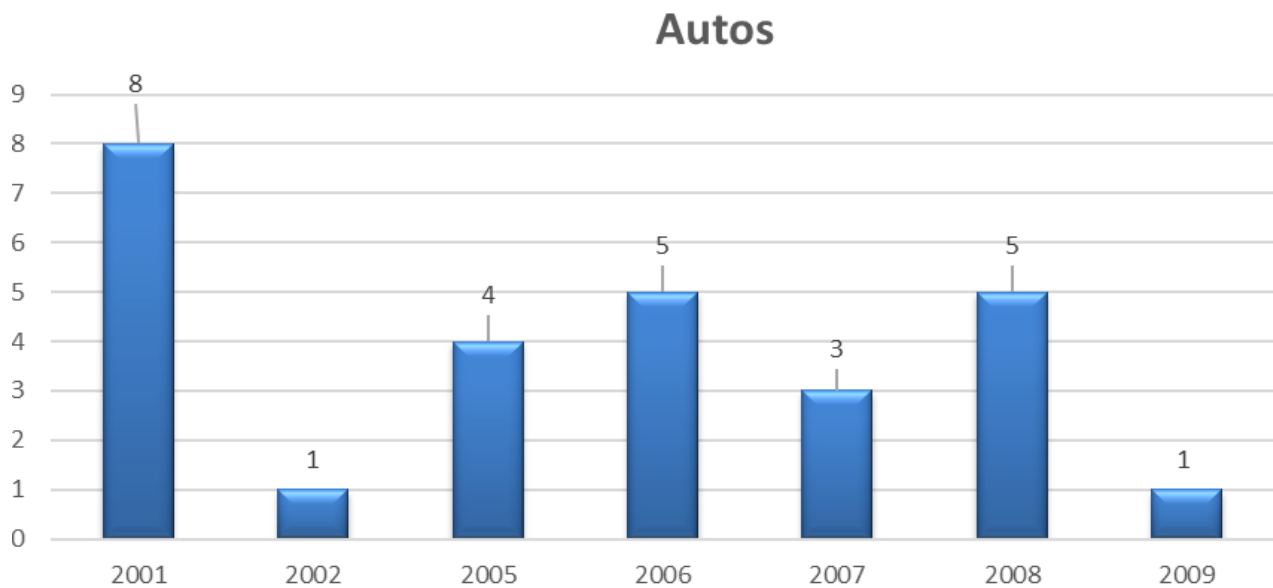


Chart 4 – Other Rubber Tire Vehicles Exceeding ULB by Year

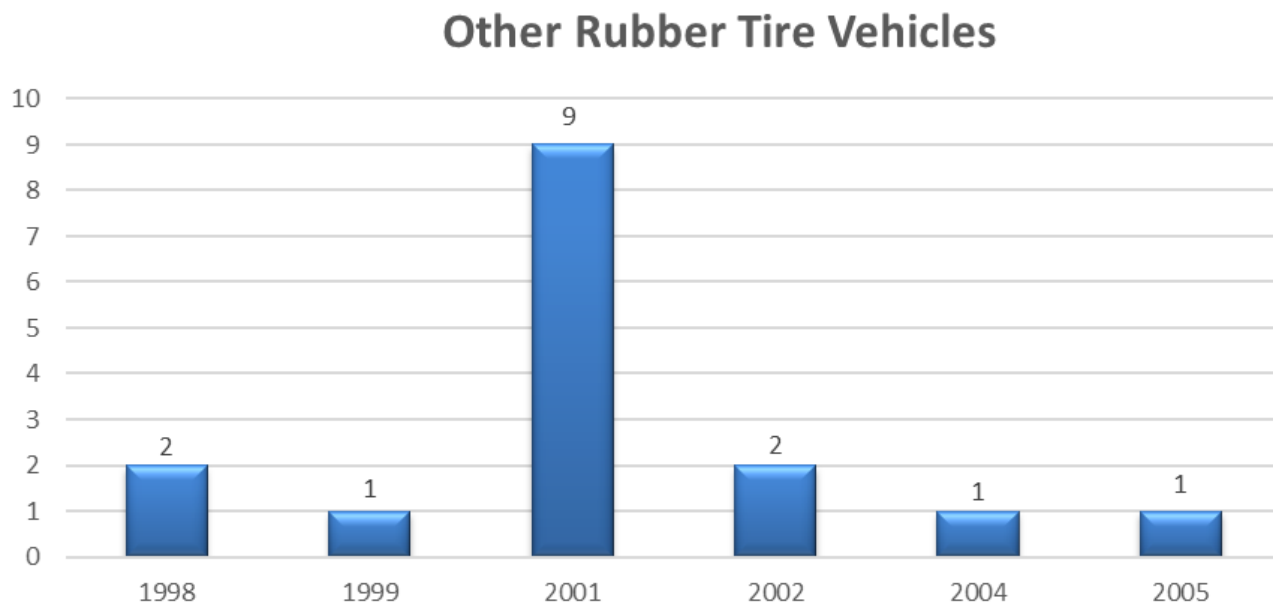


Chart 5 – Non-Revenue Vehicles Exceeding ULB in The Next Five Years

