

SR 25-566

Oakland Alameda Access Project

Providing Access and Connections



OAKLAND ALAMEDA ACCESS PROJECT



Project Purpose and Need

- Improve multimodal safety and reduce conflicts between regional and local traffic
- Improve mobility and accessibility for travelers between I-880, SR-260, City of Oakland downtown neighborhoods, and the City of Alameda
- Enhance bicycle and pedestrian connectivity and accessibility within the project study area

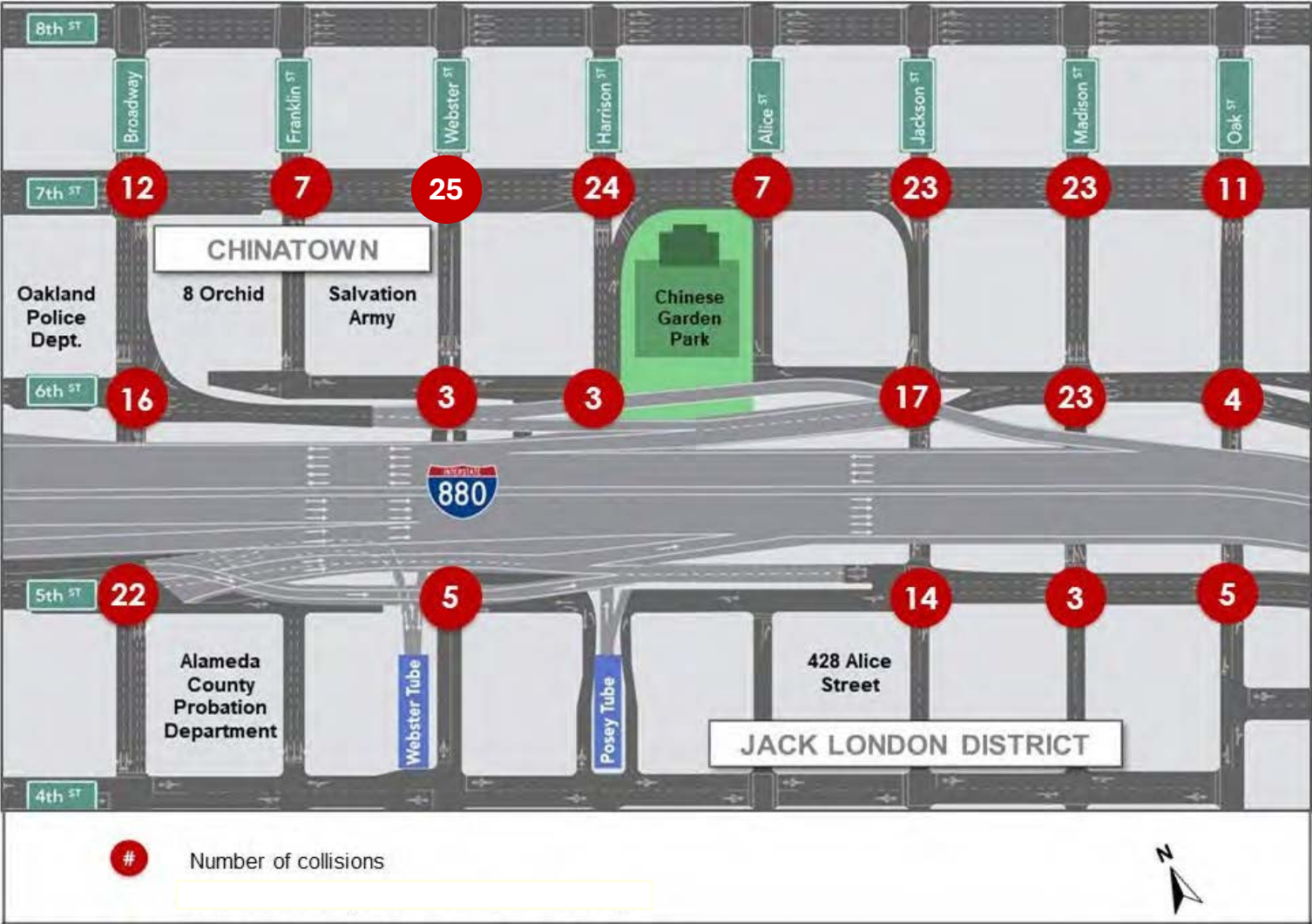
Project Purpose and Need

*Existing Travel Route
between I-880 and the
Tubes*

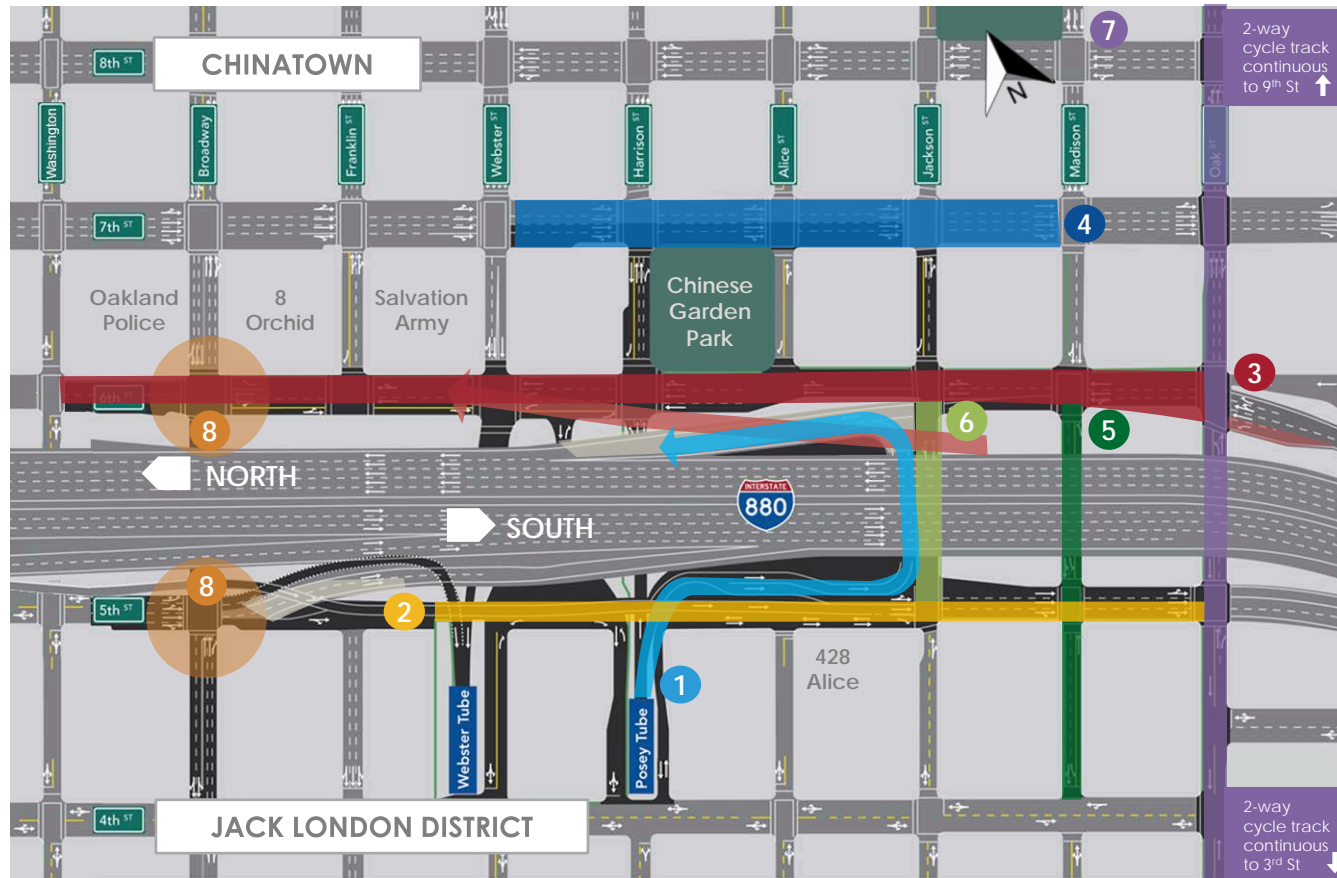


Project Purpose and Need

Total Number of Collisions at Local Intersections (2016-2018)

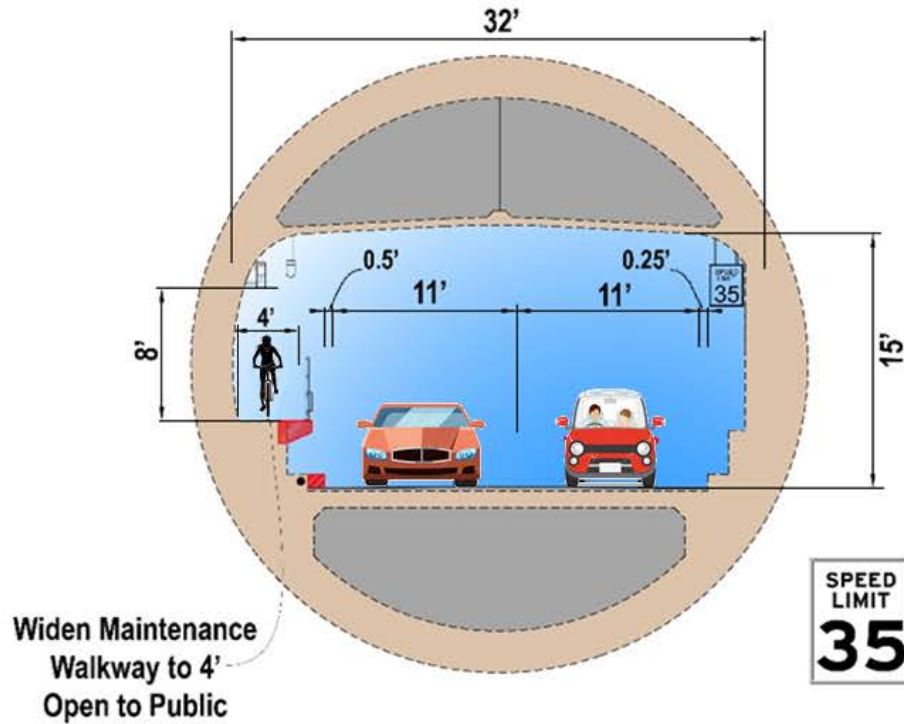


Major Roadway Improvements



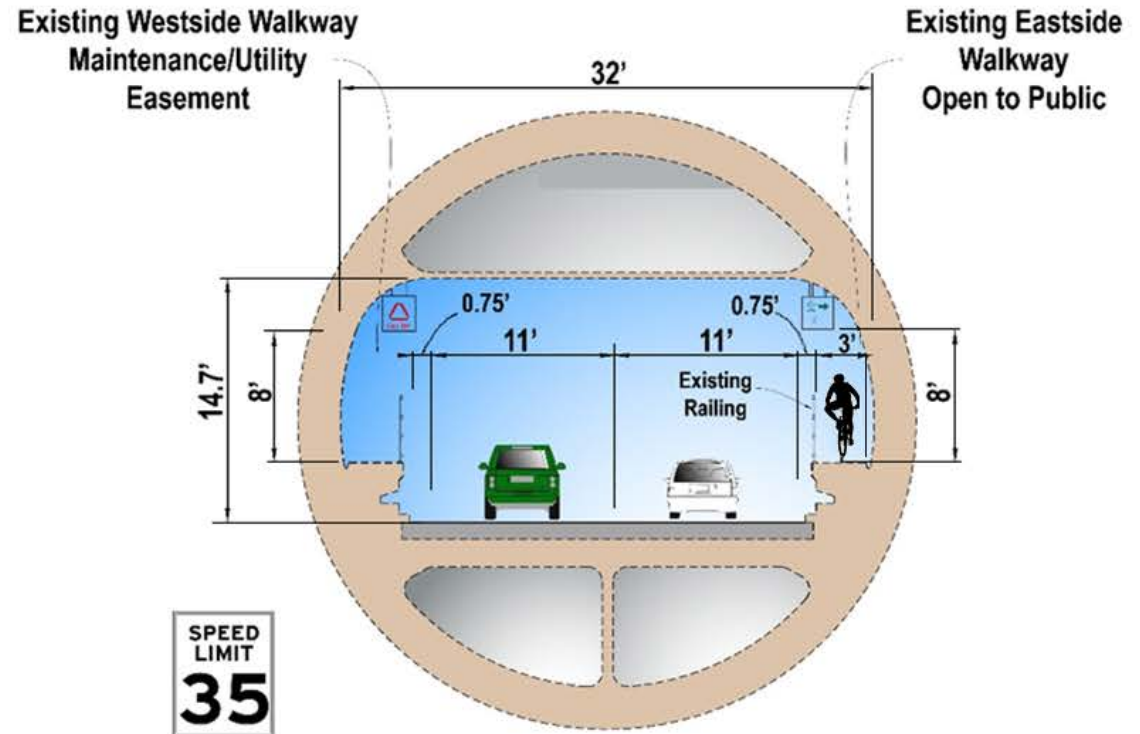
- 1 **Construct** right-turn from Posey Tube onto Horseshoe to NB Jackson St on-ramp
- 2 **Realign** WB I-880 Jackson St off-ramp and reconstruct 5th St
- 3 **Widen** NB I-880 Oak off-ramp, **remove** NB I-880 Broadway off-ramp, **reconstruct** 6th St for multi-modal access (Oak St to Washington St)
- 4 **Restripe** 7th St and improve intersections
- 5 **Restripe** Madison for 2-way travel between 4th to 6th St
- 6 **Restripe** Jackson for 1-way between 5th to 6th
- 7 **Restripe** Oak St for multimodal access (2-way cycle track from 3rd to 9th St)
- 8 **Reconfigure** intersections at Broadway and 6th and 5th St

Tube Improvements



Webster Tube Cross-Section

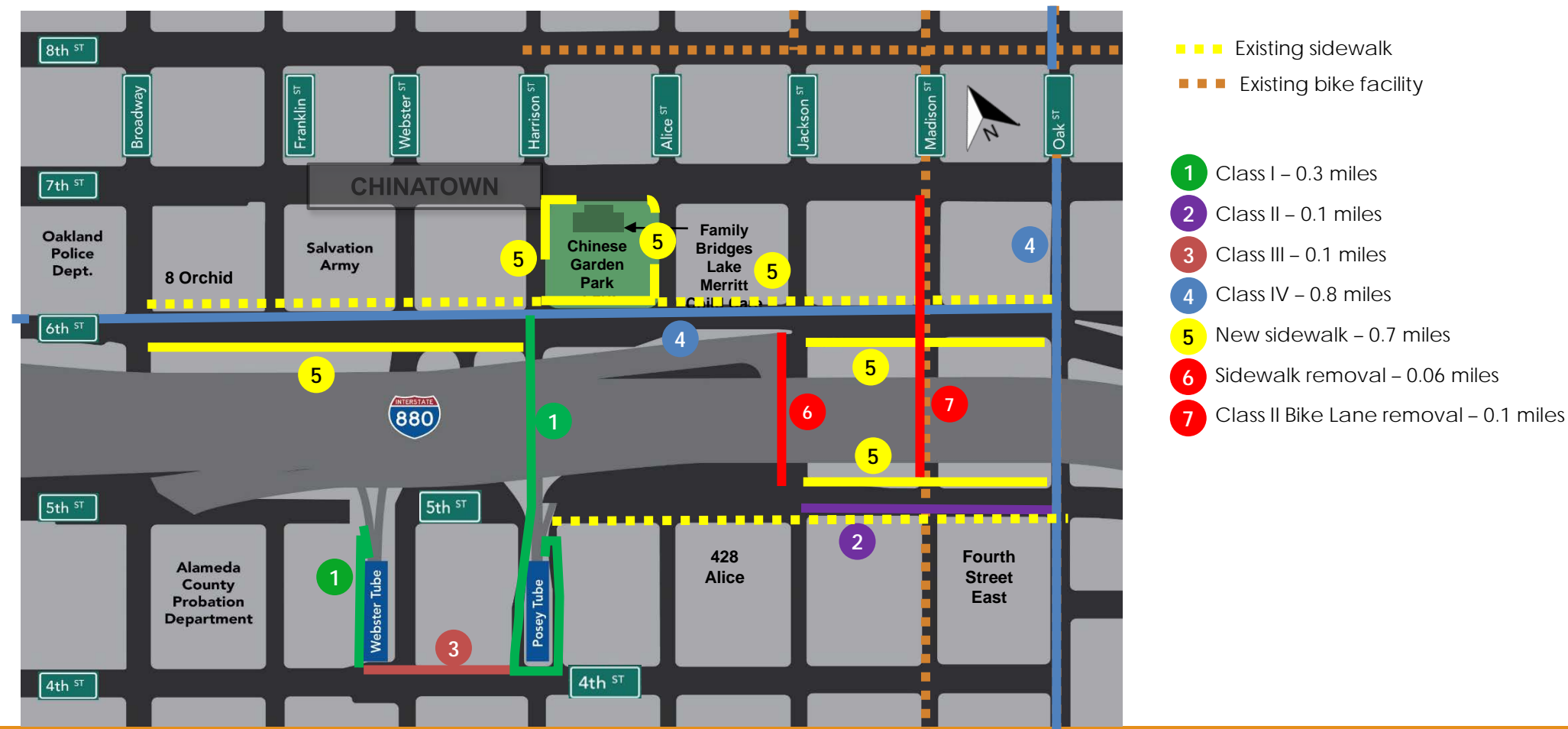
Section D - Looking North Towards Oakland



Posey Tube Cross-Section

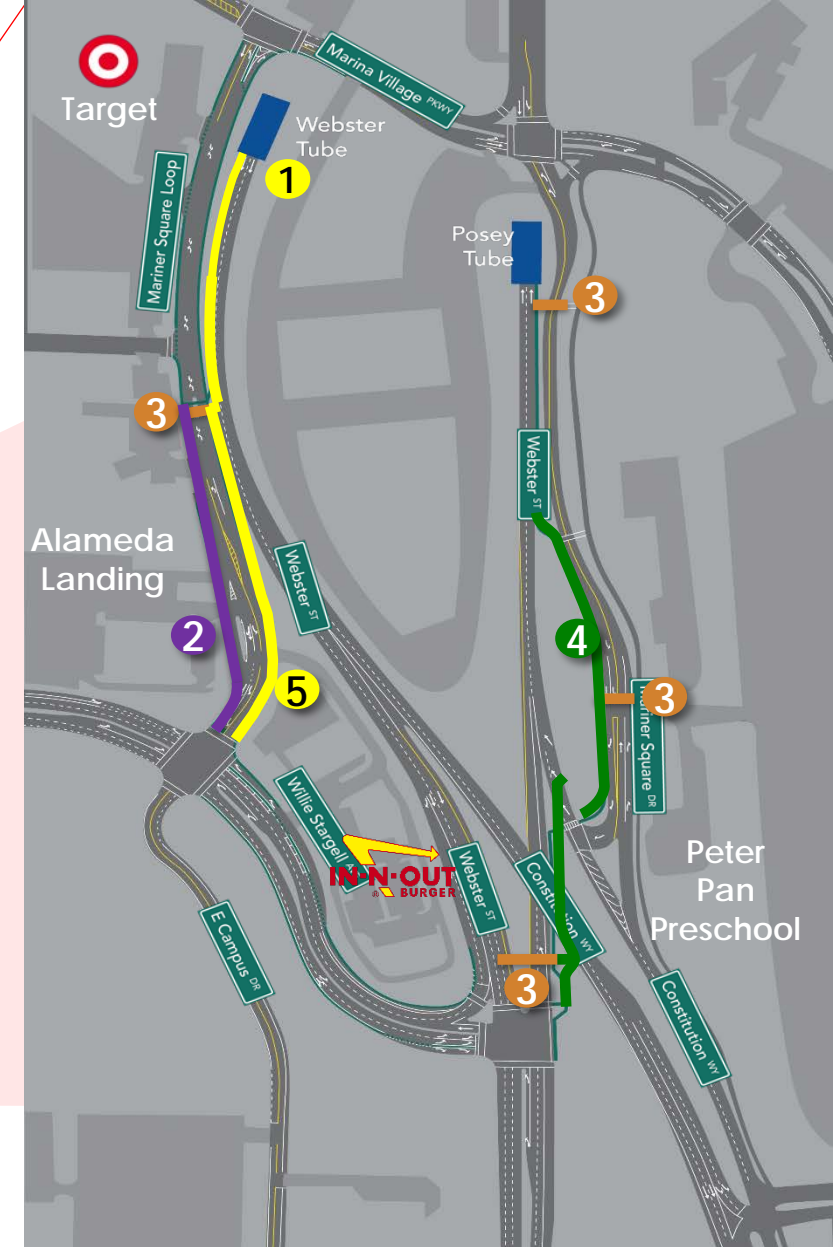
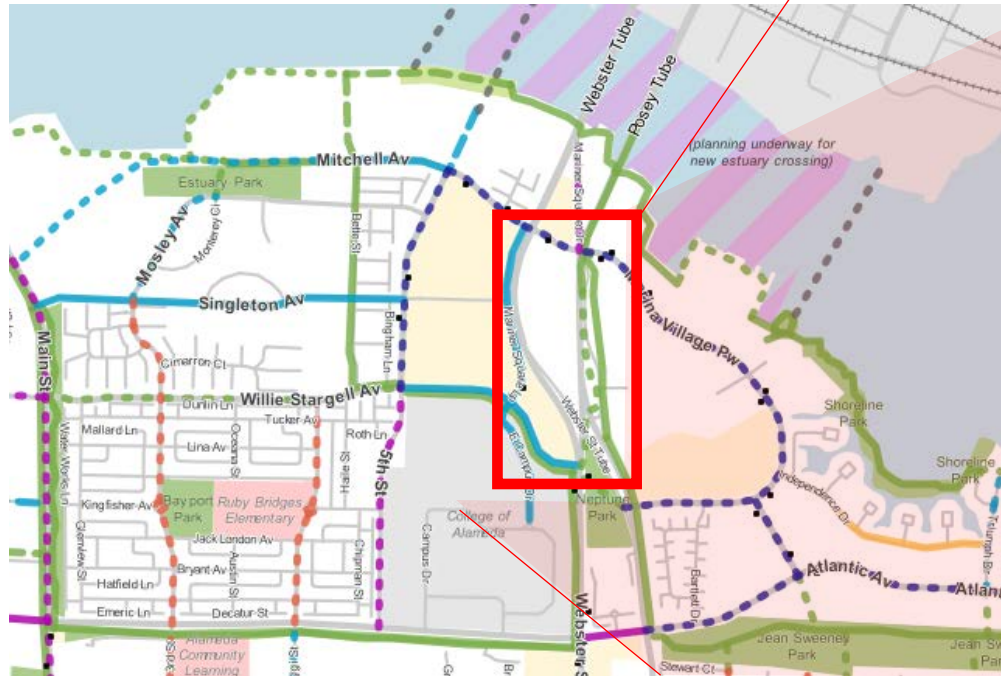
Section D - Looking North Towards Oakland

Bike/Ped Safety and Access Improvements in Oakland



Bike/Ped Safety and Access Improvements in Alameda

- 1 Widen and open **walkway** through Webster Tube and along Webster Street connecting to Mariner Square Loop (0.8 miles)
- 2 New **Class II** bike lane on Mariner Square Loop (0.12 miles)
- 3 Add crosswalks to connect ped/bike paths
- 4 New **Class I path**: Realign and widen path to 8 feet (0.2 miles)
- 5 Sidewalk extension on Mariner Square Loop (0.1 miles)



Project Timeline

Broadway Jackson Interchange Improvement Project (1997-2013)

1997	2005	2013
<ul style="list-style-type: none"> • Project Efforts Begin • 1st Project Study Report (PSR) not approved by Caltrans (CT) 	<ul style="list-style-type: none"> <u>2000</u> <ul style="list-style-type: none"> • 2nd PSR Document approved by CT • Included in Route 260 Deficiency Plan <u>2002</u> <ul style="list-style-type: none"> • Environmental Document not endorsed by Cities <u>2003-2006</u> <ul style="list-style-type: none"> • Various agency led studies 	<ul style="list-style-type: none"> <u>2011</u> <ul style="list-style-type: none"> • 3rd PSR document approved by CT

Oakland Alameda Access Project (2014-Today)

2014	2022	2030
<ul style="list-style-type: none"> <u>2014</u> <ul style="list-style-type: none"> • Measure BB Approved • Project Approval / Environmental Document (PA/ED) phase work begins 	<ul style="list-style-type: none"> <u>2015-2020</u> <ul style="list-style-type: none"> • 250+ Focus Group Meetings • Scoping Meeting • Various forms Outreach <u>2020</u> <ul style="list-style-type: none"> • Draft Environmental Document Released • Public Comment Period <u>2022</u> <ul style="list-style-type: none"> • PA/ED Complete with Caltrans • Plans, Specifications and Estimate (PS&E) Phase begins 	<ul style="list-style-type: none"> <u>2024</u> <ul style="list-style-type: none"> • PS&E Complete • Monthly Stakeholder Meetings begin in February <u>2025</u> <ul style="list-style-type: none"> • Construction Contract Advertised and Awarded <u>2029</u> <ul style="list-style-type: none"> • Anticipated Construction Complete

Posey Tube to NB I-880 Video



WB I-980 Jackson to Webster Tube Video



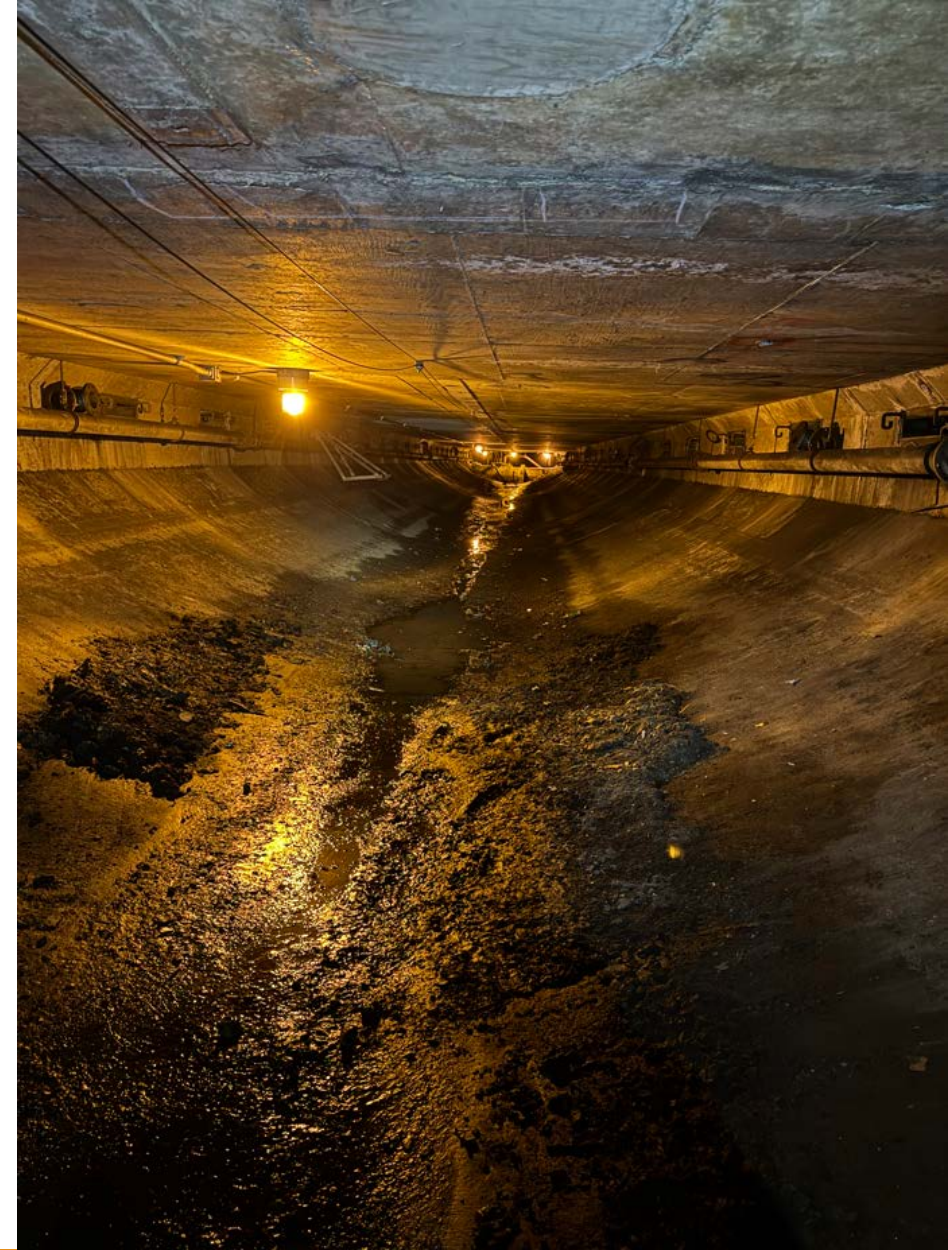
NB I-880 Oak Street via 6th Street Video



Caltrans Maintenance Project

Ongoing repairs at Posey and Webster tubes:

- Spall and joint repair
- Cleaning the lower plenum
- Webster and Posey Tube nightly closures through end of December



CONSTRUCTION IMPACTS

- PROJECT TIMELINE – 2026 – 2029

IMPACTS:

- Removal of NB Broadway ramp
- Removal of SB Jackson ramp
- Webster and Posey Tube Closures
 - Expect traffic delays as one lane of both Posey and Webster tubes will be closed.
 - Note: At no time will both the Posey and Webster Tube be closed simultaneously.

Traffic Management

- Project Team working with Alameda, Oakland and AC Transit staff regarding bus operations
 - Traffic Signal Timing
 - Lane Configuration during construction
- Implementation of changes will be done in advance of actual construction occurring. Timing will need to be coordinated with Construction activities.
- Noticing regarding changes to bus stops will be provided in accordance with AC Transit Guidelines.



A better way to move through Oakland & Alameda



“Improving safety, reducing congestion, and enhancing access for **drivers, cyclists, and pedestrians.”**



Questions? oaapcommunications@dot.ca.gov

HOW CAN I GET INFORMATION ON OAAP PROJECT?

[PROJECT WEBSITE](#)

[PROJECT TOOLKIT](#)

PROJECT EMAIL: oaapcommunications@dot.ca.gov

[Join MAILING LIST FOR UPDATES](#)

Project Committee Groups being formed during Construction:

- Integrated Communications Team
- Citizen's Advisory Committee
- Policy Advisory Committee

SOCIAL MEDIA CAMPAIGN

Communication Notifications during Construction



Real-time updates on socials, Next Door, Google maps, Apple maps, Waze & project website



Weekly Construction Update: construction photos, maps, what has been completed, what to expect



Closure notices



Oakland Roots & paid media

Scan Below to Subscribe for Updates:



Stay informed and sign up get news and updates about the Oakland Alameda Access Project!

Email: oaapcommunications@dot.ca.gov

OaklandAlamedaAccessProject.com



OAKLAND ALAMEDA

ACCESS PROJECT

