



Realign



SR 24-454 Item 3.B.

Realign Update

**City of Oakland/AC Transit Interagency Liaison Committee (ILC)
Meeting**

September 4, 2024

Realign Project Phasing

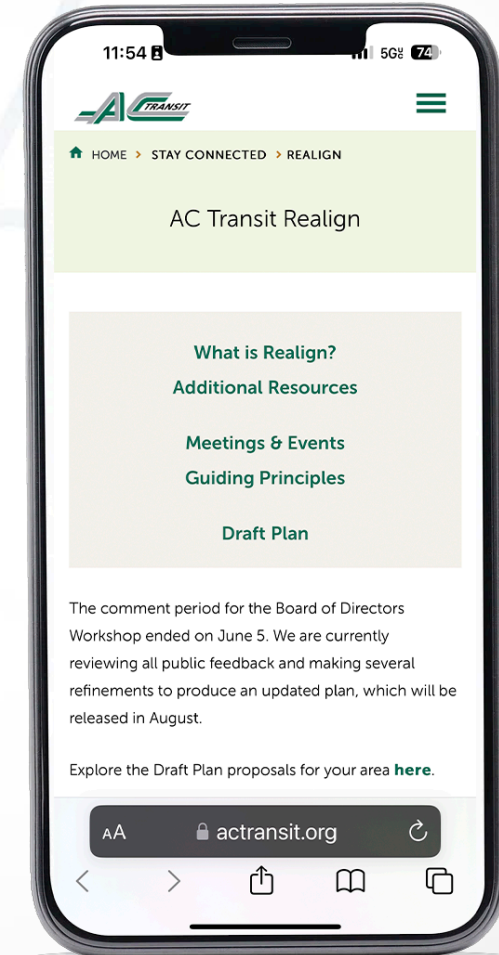


Public Engagement: Phase 4

May 5 through June 5, 2024

Engagement metric highlights:

- **23,116** Website Views
- **529** Online survey tool responses
- **180** Community events
 - **5,784** Touchpoints
- **49** emails
- **6** Phone calls
- Social Media Performance
 - **45,836** Impressions
 - **1,774** Engagements



Realign



Public Engagement: What We Heard

Positive Sentiments

- Support better transit connections
- Support more direct routes
- Support maintenance of coverage
- Appreciated increase in frequency on more lines

Negative Sentiments

- Concerned with Frequency reductions
- Concerned with consolidation of Lines 51A and 51B
- Concerned with level of service in central Alameda, Berkeley Hills and El Cerrito Hills

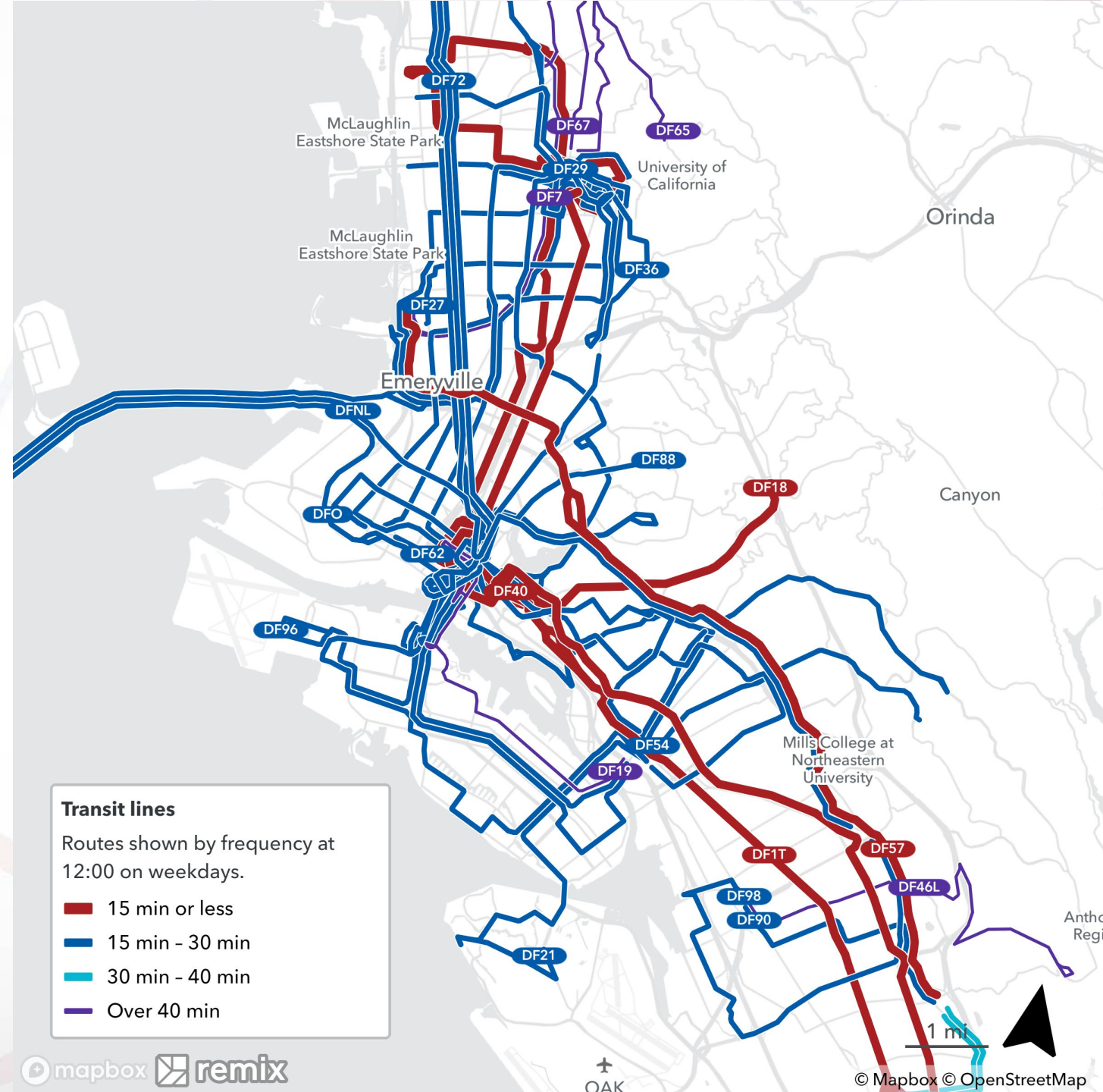
Adjustments to Draft Plan

- Reflects significant public and operator feedback
- Maintain Lines 6, 51A, and 51B
- Move Line 7 terminal in Emeryville from Amtrak Station to Public Market
- Line 19 shortened to downtown Oakland
- Line 20 in Alameda Point extended west to Pan Am Way
- Line 21 split between Skyline High School and Chabot Space & Science Center
- Adjust Line 29 to downtown Berkeley, route instead via Sacramento & Stanford/Powell
- Adjust part of Line 73/805 routing near Coliseum BART



Northern Alameda County

- Adjusted Line 29 provides new service on Alcatraz and Stanford and extends to downtown Berkeley
- Adjusted Line 96 now provides service to Brooklyn Basin
- Service on Ashby is now provided by new Line 27
- Line 19 operates between downtown Oakland and Fruitvale BART.
- Line 21 no longer serves OAK Airport, replaces Line 39 service on Skyline and serves Chabot Space & Science Center
- Adjusted Line 20 provides new service on Alameda's West End, extends to Pan Am Way
- Slight frequency reduction on Lines 54 & 73



Frequency and Reliability Impacts*



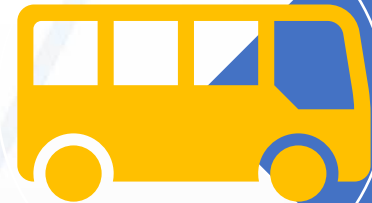
+ 35.5%
population with access
to 15-minute service



+ 22.9%
zero-vehicle
households with access
to 15-minute service



+ 53.7%
jobs with access to 15-
minute service



8
lines changed to
improve reliability

*As compared with current network, approximations using 2020 Census numbers

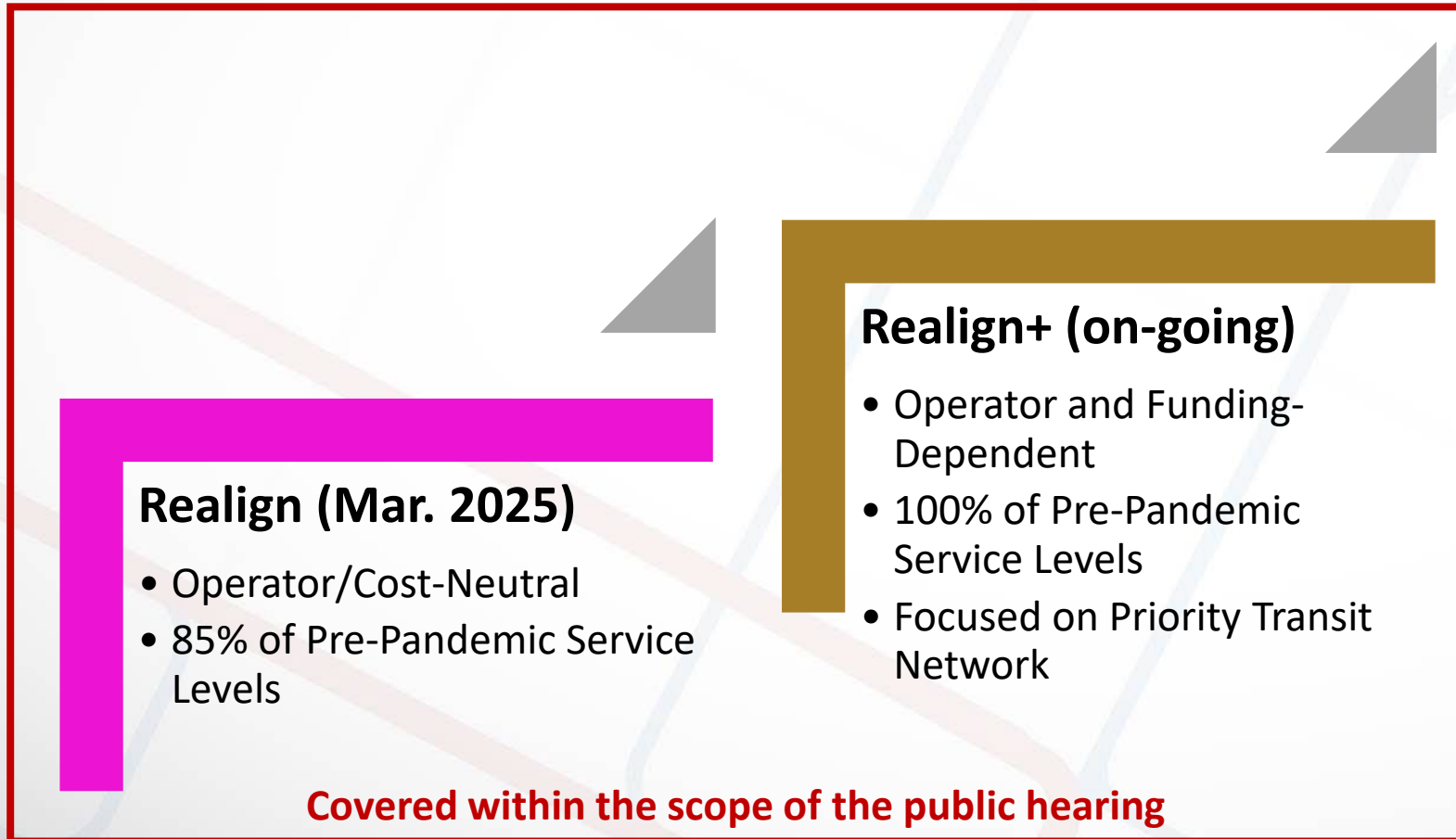
Paratransit Impacts

- Paratransit coverage area currently frozen at larger 2019-era network
- Grandfathering has cost and policy implications
- Estimated ~100 active paratransit clients would fall outside of $\frac{3}{4}$ mile range of fixed-route in Draft Final Plan





Realign Service Levels *(from near- to long-term)*



Vision Plan (long-term)

- Operator and Funding-Dependent
- Aspirational, unconstrained network plan
- Incorporating what we've heard from riders, public, advocates, and municipalities.



Realign+ : Invest in Primary Route Network

Frequency and Span Minimums

Weekdays:

5:00 – 12:00 a.m.

at least every 15 minutes:

7:00am – 7:00pm

Weekends:

6:00 – 12:00 a.m.

at least every 20 minutes:

7:00am – 7:00pm

1. **Line 72R**
2. **Line 1T** (*every 7-8 minutes*)
3. **Lines 51A/B** (*every 10 minutes*)
4. **Line 14**
5. **Line 62**
6. **Line 88**
7. **Line 73**
8. **Line 36** (*based on existing Line 36/79 alignment ridership*)
9. **Line F**
10. **Line 54**
11. **Line 76**
12. **Line 27** (*based on existing Line 7 and Line 79 ridership*)
13. **Line 12**
14. **Line 52**
15. **Line 299** (*based on existing Line 99 ridership*)

Next Steps:

**Draft
Final Plan**

**We are
here**

August 7

Set Public Hearings and
Open Public Comment Period

**Public
Hearings**

September 9-11

Convene Public Hearings,
Close Comment Period

**Service
Standards**

September 25

Service Standards Draft

**Final Plan
Decision**

October 9

Board votes on Final Plan

Note: Vision Plan to be refined in early 2025.

Share your feedback on proposed bus line changes
at *actransit.org/realign*.

Email us at *realign@actransit.org*

Call us on our Community Project Line:

(510) 267-5631 (English) • (510) 267-5632 (Spanish) • (510) 267-5633
(Mandarin) • (510) 267-5634 (Cantonese)

Attend a Public Hearing:

September 9 at 6:00PM • September 10 at 9:00AM • September 11 at
2:00PM or 6:00PM

**Submit your comment card in the Realign drop box at the
library.**