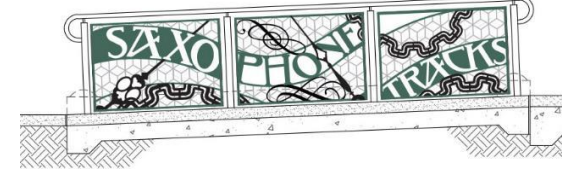
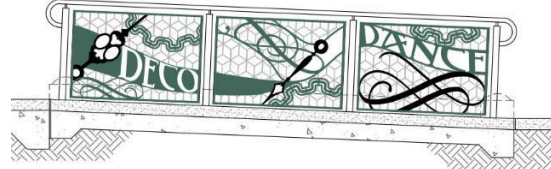


East Bay Bus Rapid Transit Project



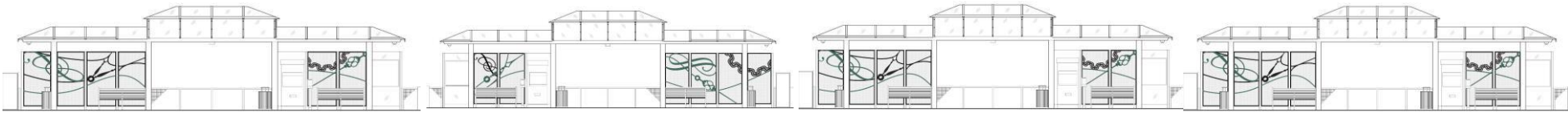
Policy Steering Committee Meeting

December 4, 2019



Agenda

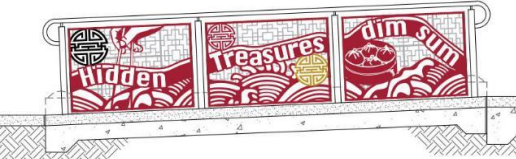
- Operational Readiness for Passenger Service
- Construction Readiness - Substantial Completion
- Branding and Sponsorship & Naming Rights
- Fare Enforcement
- Community Outreach for Passenger Service
- Contract Compliance Update



March 2020 - Operational Readiness for Service

FTA OP54 Requirements to Carry Passengers

- ✓ Traffic and pedestrian signals activated
- ✓ Station architecture complete and energized
 - Platforms, canopy, lighting, hand-rails, etc.
- ✓ Northern Layover and San Leandro Transit Center facilities constructed
- ✓ County Sheriff's deployed
- ✓ Passenger amenities activated
 - Ticket vending machines, message signs, cameras, etc.
- ✓ Enhanced art elements installed
- ✓ Traffic Signal Priority activated and coordination on-going
- ✓ Fiber optic network complete



Construction Readiness Goals – January 2020

- **Station Platforms:**
 - Finish construction on remaining 10 platforms
 - 46 top slabs (finish surface), tactile strips, and rub-rails
 - Install canopies at 18 platforms & lighting at 16 platforms
 - Install furniture, trash receptacles, windscreens, and hand rails
 - Service connections to remaining 29 Platforms
- **Northern Layover facility complete.**
- **San Leandro Transit Center project complete.**
- **Fiber optic communications network installed and activated. Ready for testing.**
- **Dedicated, continuous, unimpeded busway ready for use.**
- **All paving, traffic signage and roadway striping installed.**
- **All traffic and pedestrian signals energized and operating. Ready for testing.**
- **All street and pedestrian lighting installed and operating. Ready for testing.**
- **All 27 BRT buses outfitted with CAD/AVL, APCs and Carey Fingers. Ready for testing.**

Curb to Curb Paving Completed for Día de los Muertos Festival



Zone 9 – Curb to Curb Paving Complete

(Except 52nd Ave to 55th Ave)

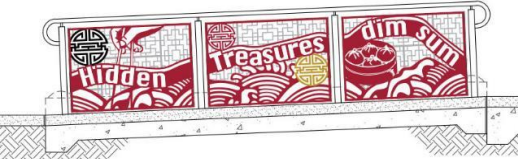
Seminary Ave to Havenscourt Blvd.

Milling

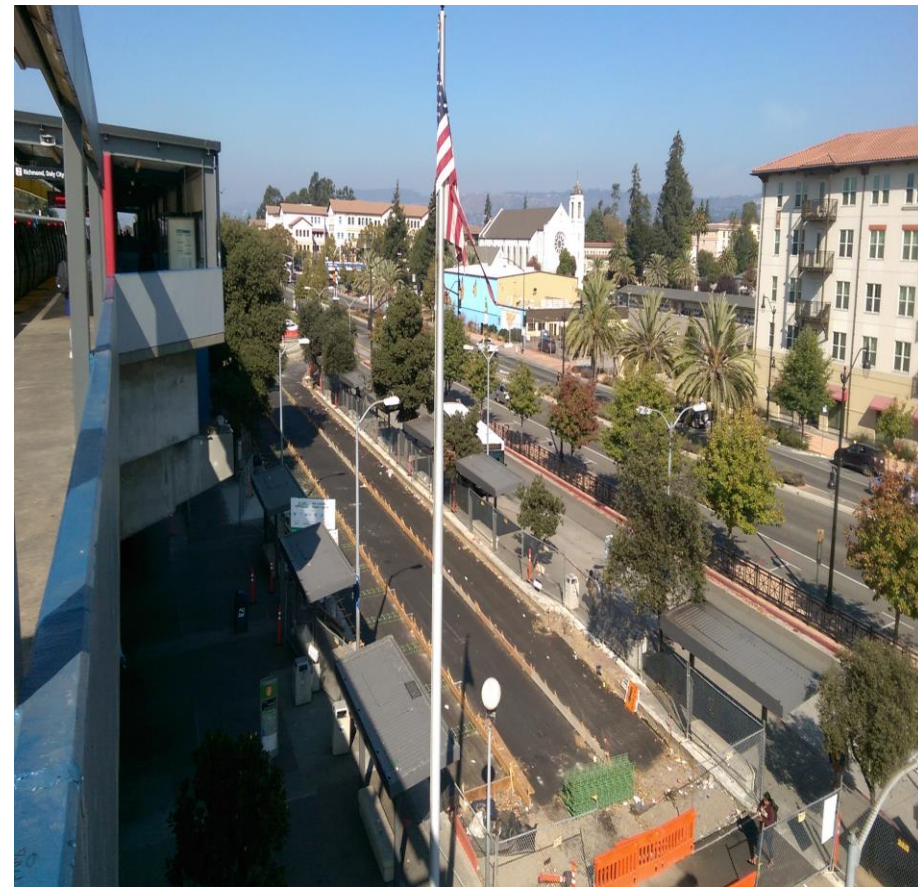


Paving





San Leandro Transit Center



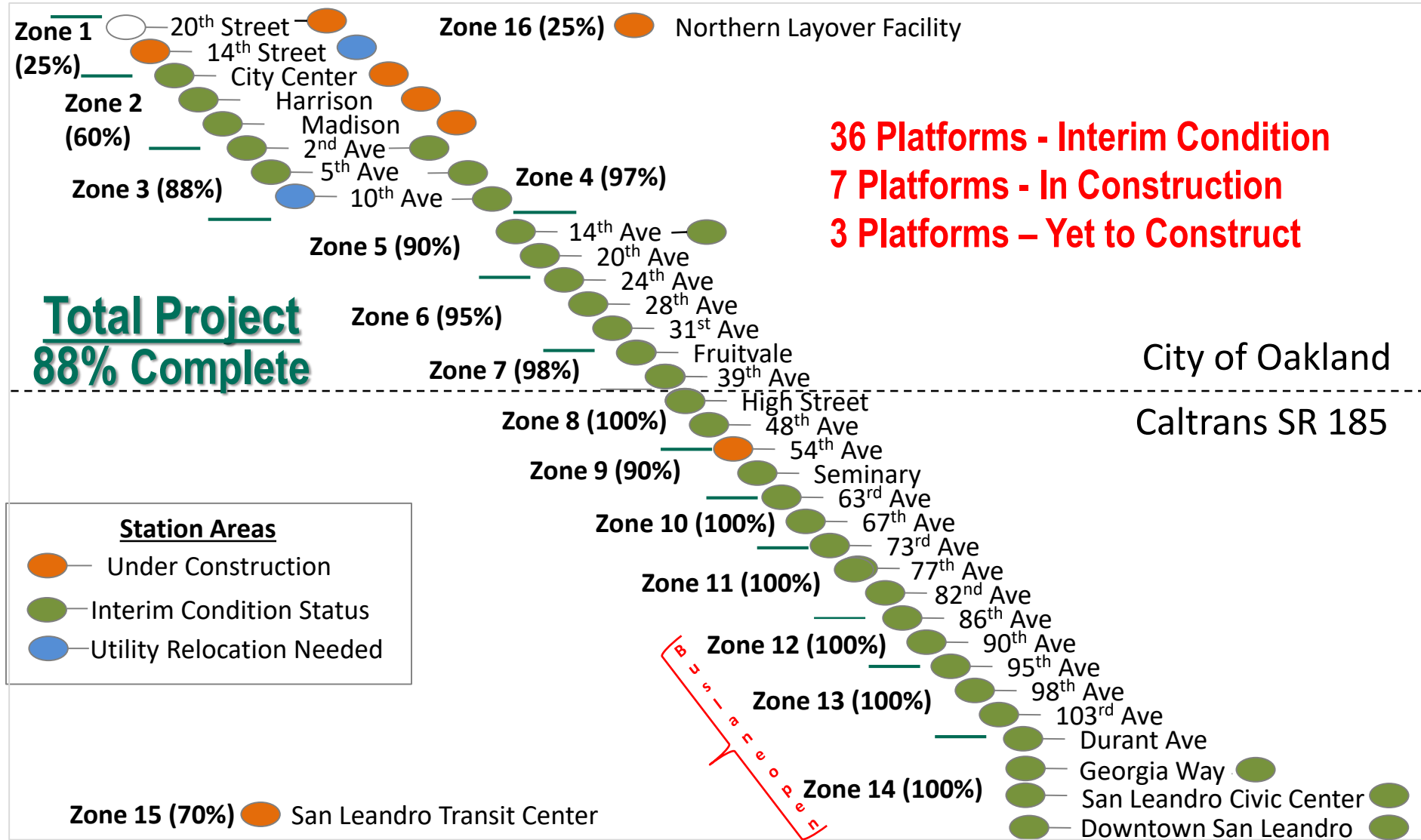
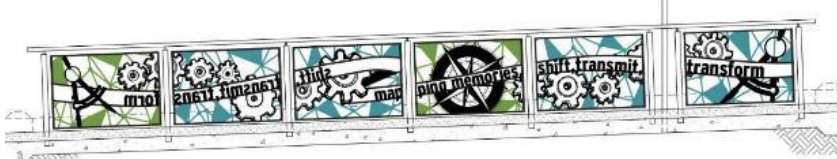
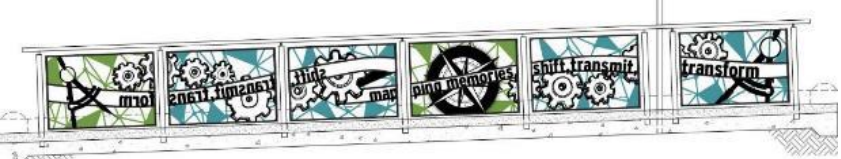
BRT Operator Training – Bus Lane Open – San Leandro to 90th Ave in Oakland

Bus Approach



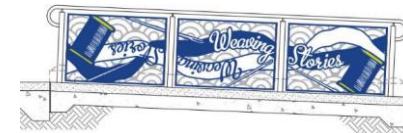
Docking





East Bay Bus Rapid Transit

Downtown Oakland to San Leandro
International Blvd to East 14th St



Construction Progress by Activity

Construction Activity		PSC - September 2019	PSC - December 2019
Zones Progress (16 Total)	Interim Status	6	12
	In-Construction Status	9	4
	Paving Status	6	4
Platform Progress (46 Total)	Interim Status	33	36
	In-Construction Status	6	10
	Canopy Installation	28	36
Signals & Lighting	Segment A	98%	98%
	Segment B	51%	85%
Communication Systems	Segment A	85%	95%
	Segment B	65%	85%
Polycarbonate Canopy (46 Total)	Fabrication	100%	100%
	Installation	28	36
Artistic Enhancement (Handrails & Windscreens)	Fabrication	100%	100%
	Installation	0%	0%

Segment A: 42nd Ave to San Leandro Transit Center

Total

82%

88%

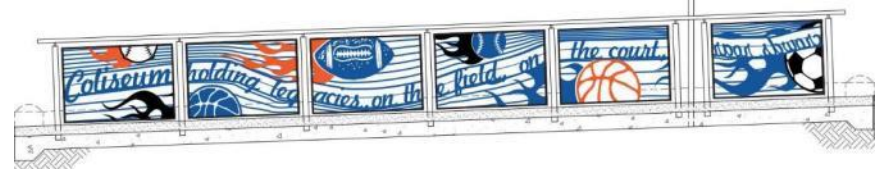
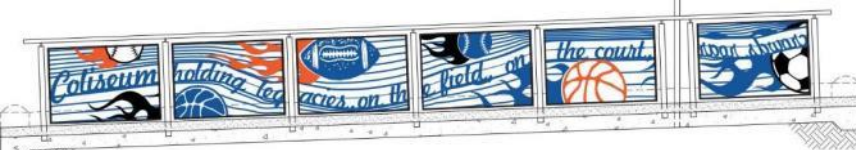
Segment B: 20th St @ Broadway to 42nd Ave



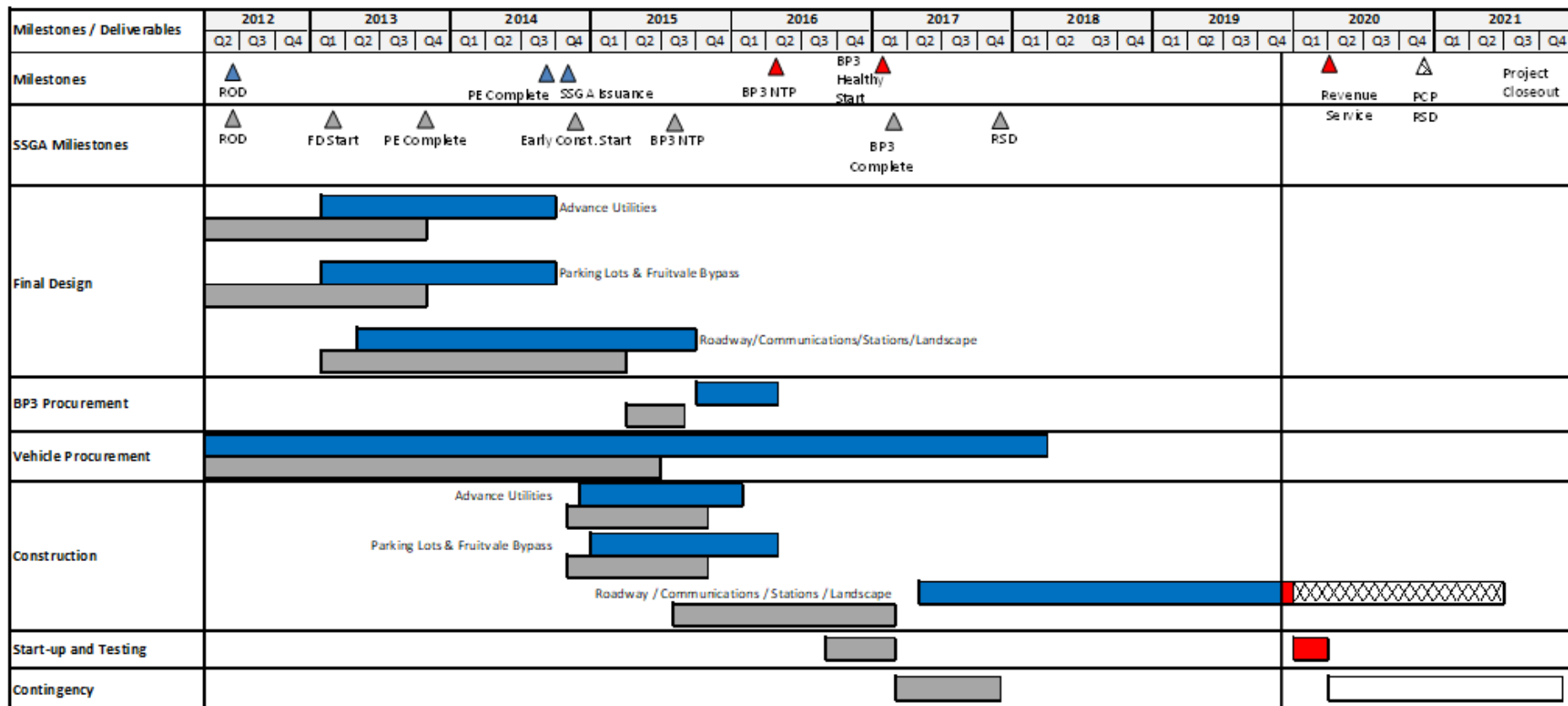
No contingency remaining in overall construction schedule

Staff is implementing special measures in an effort to make our deadline:

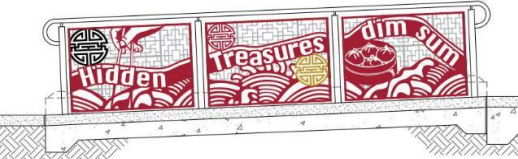
- Work during holiday moratorium.
- Continue extended hours and Saturday work. Considering Sunday work.
- Consider more night work especially for paving operations.
- Continuously exploring opportunities to eliminate, reduce, defer or transfer scope where feasible.



Program Schedule



Critical Path
SSGA Base line

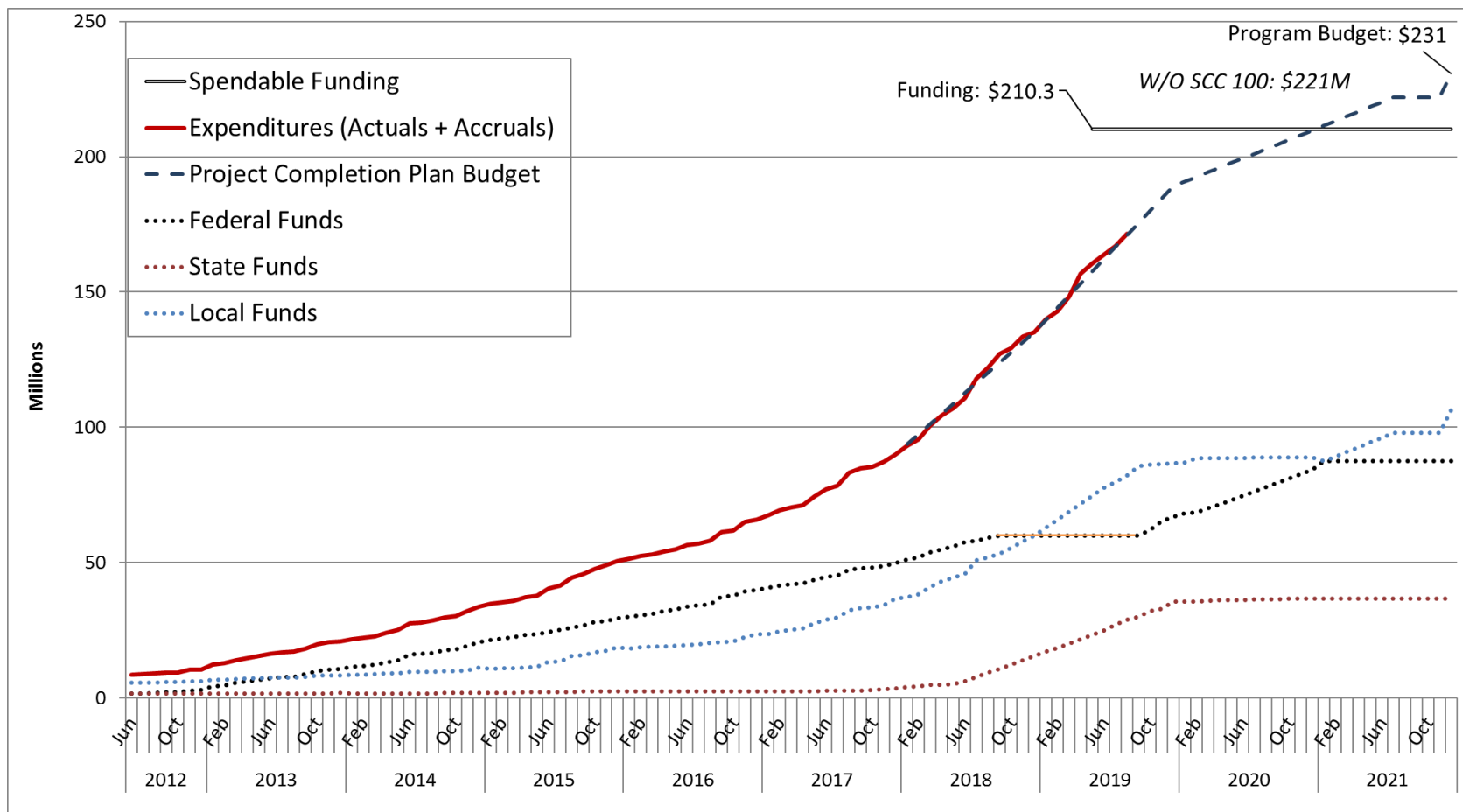


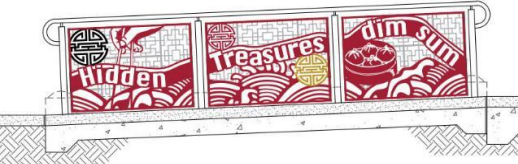
Project Management and Construction Budgets

Service Type	Vendor	Contract Value	Paid to Date	Remaining	Pct. Expended
Construction Contractor	O.C. JONES & SONS, INC.	\$108,112,200	\$88,507,018	\$19,6051,182	82%
Design Services During Construction	PARSONS TRANSPORTATION GROUP	\$ 7,203,206	\$7,127,831	\$75,375	99%
Construction Project Management	WSP Inc.	\$ 5,272,336	\$5,073,064	\$199,272	96%
Public Outreach Services	L. LUSTER & ASSOCIATES, INC.	\$ 982,621	\$897,384	\$85,237	91%

- Construction Contractor budget through project completion.
- Design services contract budget through project completion.

Project Funding





Branding Update

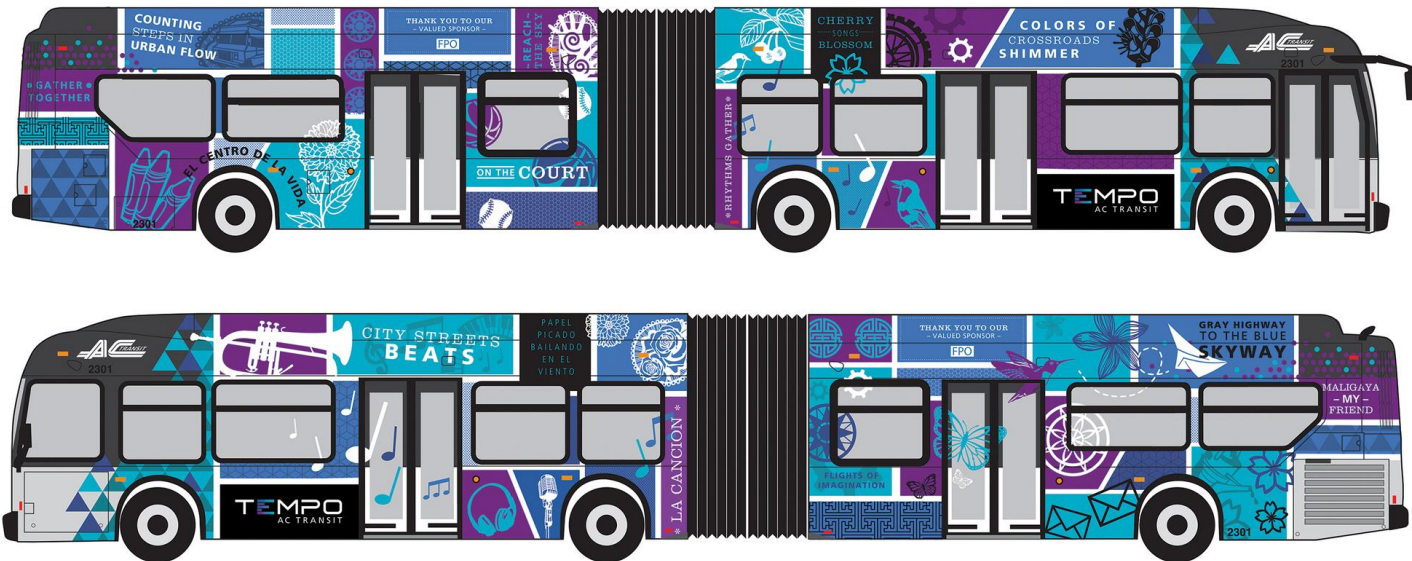
Design:

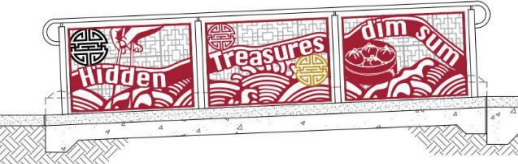
- Bus wrap design finalized. Artwork will be provided to the awarded production and installation vendor
- Ticket Vending Machine will be wrapped with a similar design to the bus

Production and Installation Vendor:

- IFB is currently open; closes on 11/22
- Vendor award anticipated for 12/11 Board meeting
- Notice to Proceed and schedule will be confirmed after vendor award

BRT Livery – Design Template

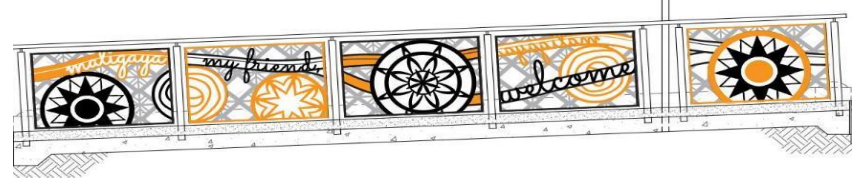
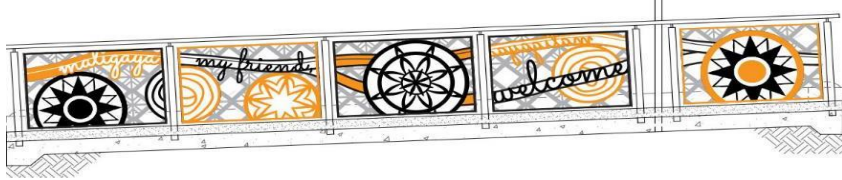




Sponsorship and Naming Rights Update

The Superlative Group is actively selling to potential sponsors in the following target categories:

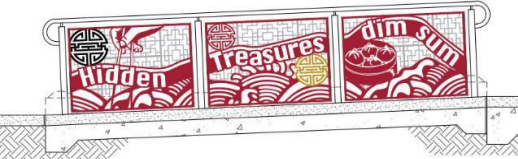
- Education
- Professional Sports
- Energy
- Financial Services
- Telecommunications/Wireless
- Technology
- Healthcare
- Fast-Moving Consumer Goods



Fare Enforcement

Civil Administrative Citation

- District to write fare evasion ordinance based on 640 Penal Code
- Present to Board for adoption in January
- Fines will be civil in nature and non-criminal
- Use the same appeal process currently used for bus stop citations
- Three level of hearings provided to violator
- Court provides final decision



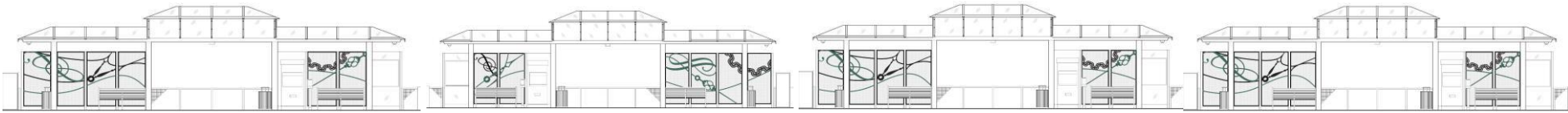
Community Outreach for Passenger Service

- Ongoing Outreach Team engagement through major construction
- Transition from construction mitigation to community education in early 2020
 - Attend community events and festivals, neighborhood meetings, rider trainings
 - Connect to riders with ambassadors positioned along the corridor
 - Distribute digital communications (eNews, social media, website)
 - Disseminate new rider educational collateral materials
 - Targeted audiences: seniors, youth, people with disabilities, cyclists, pedestrians, motorists, new and existing riders



Community Outreach for Passenger Service (cont.)

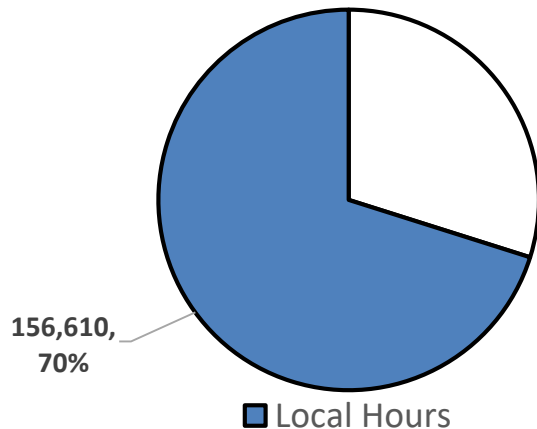
- Key Messages
 - Safety tips for riding the bus and navigating the corridor
 - How to ride
 - Platform and multiple door boarding
 - Boarding with a bicycle
 - Accessibility tips for riders with disabilities
 - How to pay fare
 - 90-day promotional fare period
 - "Boots on the ground" marketing to increase Clipper card usage



Project Labor Agreement / Construction Careers Policy (PLA/CCP) Workforce Utilization Thru 09-30-2019

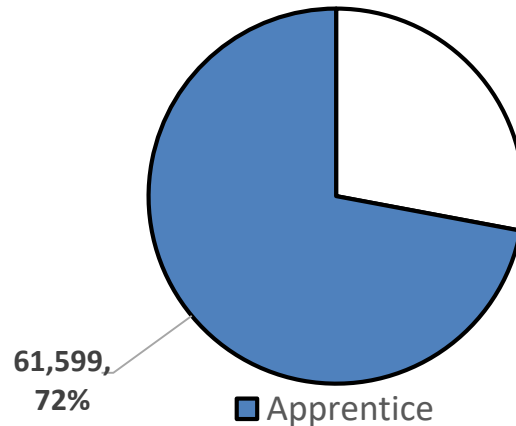
Total Project Labor Hours for Reporting Period: 446,667

Local Hours w/Offsite Credit



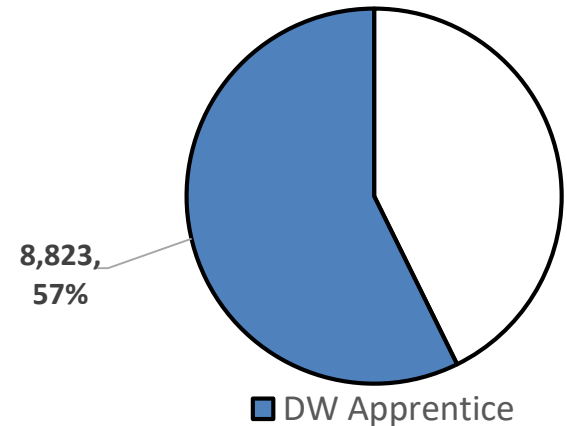
Local Goal (50%): 223,334

Apprentice Hours

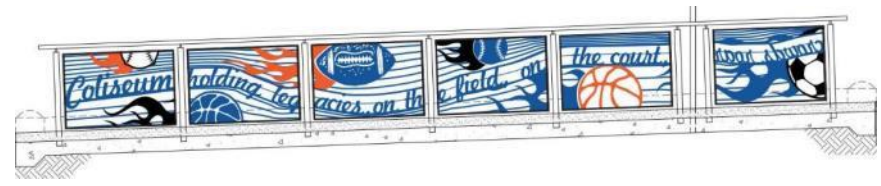
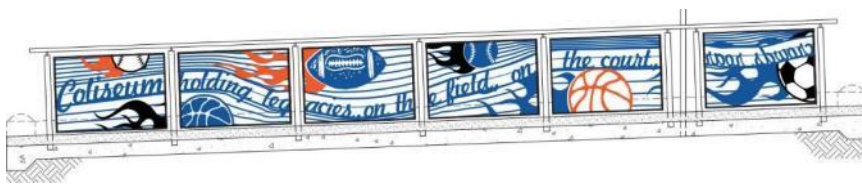


Apprentice Goal (20%): 85,495

Disadvantaged Worker Hours



**DW Goal (25%): 15,400
(of current apprentice hours)**



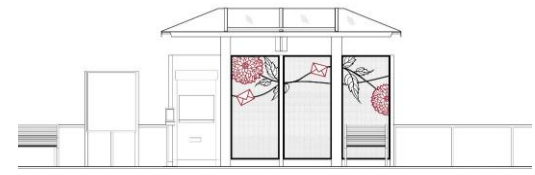
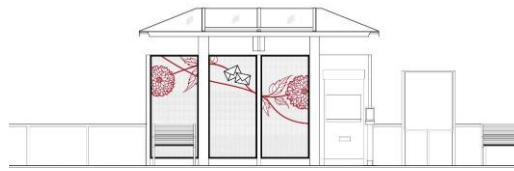
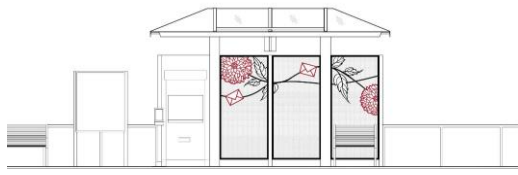
Oakland – San Leandro Residents' Hours

JURISDICTION	No. Of Workers	WORK HOURS	PERCENTAGE OF LOCAL
Oakland	134	121,140	83%
San Leandro	36	25,170	17%
Data through 08/31/2019 as of 9/17/19			

BRT Bid Package III DBE Utilization

Contract Type	DBE Payments	DBE Payment Percentage	Project DBE Goal	Number of DBE Subcontractors
Construction Contract	\$9.3M	10.3%	8%	14
Professional Services	\$7.1M	Various	Various	14

Data through 09/30/2019 as of 10/16/19



Recap and Adjourn



Final Thoughts?

Date for Next Policy Steering Committee Meeting