



BART COVID-19 Response

Alicia Trost, Chief Communications Officer

Reimagined BART service

- We understand the public is looking to us to provide reassurance that service is as safe as possible and social distancing is followed.
- To welcome riders back and regain confidence in public transit, BART has released a 15 Step Plan while continuing to explore new measures and technologies that could assist in a safe recovery.
- Read the plan at www.bart.gov/COVID (printable Fact sheet and translations in multiple languages)



Enhanced Cleaning

- Each and every car is fogged every 24 hours.
- BART is using *hospital-grade disinfectant* in stations and on-board trains.
- Train poles are wiped down with disinfectant at the end of the line.
- Station touchpoints are wiped down multiple times a day.
- Exploring new cleaning technologies.



Match Service Level to Demand

- Running all long trains.
- We have begun to increase train frequency based on ridership data.
- Visual indicators and frequent audio announcements encourage social distancing and face coverings compliance.
- Crowding data is posted at www.bart.gov/crowding.



Crowding Charts

Antioch to SFO (Millbrae)

Passenger Load for Week of Monday, July 20 to Friday, July 24, 2020

BAY PT	N CNC	CONCD	PHILL	W CRK	LAFAY	ORND	ROCKR	MACAR	19ST	12ST	W OAK	EMBAR	MONTG	POWEL	CIVIC	16ST	24ST	GLNPK	BALPK	DALY	COLMA	S SAN	SBRN	SFO
		4:56 6	5:01 8	5:04 10	5:08 10	5:13 10	5:19 10	5:22 11	5:25 11	5:28 11	5:32 11	5:39 9	5:41 7	5:43 6	5:44 4	5:47 3	5:49 3	5:52 3	5:54 3	5:58 3	6:02 3	6:05 3	6:09 3	6:14 0
5:01 17	5:08 18	5:11 20	5:16 21	5:19 21	5:23 21	5:28 21	5:34 22	5:37 20	5:40 20	5:43 19	5:47 19	5:54 16	5:56 13	5:58 11	5:59 8	6:02 6	6:04 5	6:07 4	6:09 4	6:13 4	6:17 4	6:20 3	6:23 2	6:28 0
5:16 13	5:23 14	5:26 17	5:31 19	5:34 19	5:38 20	5:43 20	5:49 20	5:52 21	5:55 21	5:58 21	6:02 21	6:09 16	6:11 13	6:13 11	6:14 7	6:17 5	6:19 4	6:22 5	6:24 6	6:28 5	6:32 5	6:35 4	6:39 2	6:44 0
5:46 17	5:53 19	5:56 23	6:01 27	6:04 28	6:08 29	6:13 30	6:19 30	6:22 30	6:25 31	6:28 31	6:32 32	6:39 25	6:41 19	6:43 16	6:44 9	6:47 7	6:49 6	6:52 5	6:54 6	6:58 6	7:02 5	7:05 4	7:09 3	7:14 0
6:01 1	6:08 2	6:11 2	6:16 5	6:19 6	6:23 7	6:28 7	6:34 7	6:37 7	6:40 7	6:43 8	6:47 10	6:54 7	6:56 5	6:57 4	6:59 3	7:02 2	7:04 1	7:06 1	7:09 0	7:13 0				
6:16 14	6:23 16	6:26 20	6:31 24	6:34 25	6:38 25	6:43 26	6:49 26	6:52 29	6:55 28	6:58 28	7:02 27	7:09 22	7:11 17	7:13 14	7:14 9	7:17 7	7:19 5	7:22 5	7:24 6	7:28 6	7:32 5	7:35 3	7:39 1	7:44 0
6:31 3	6:38 4	6:41 6	6:46 9	6:49 10	6:53 10	6:58 11	7:04 12	7:07 12	7:10 12	7:13 13	7:17 14	7:24 11	7:26 9	7:27 6	7:29 3	7:32 1	7:34 1	7:36 0	7:39 0	7:43 0				
6:46 11	6:53 14	6:56 18	7:01 22	7:04 24	7:08 24	7:13 25	7:19 27	7:22 30	7:25 31	7:28 30	7:32 31	7:39 23	7:41 17	7:43 13	7:44 6	7:47 6	7:49 4	7:52 4	7:54 4	7:58 4	8:02 3	8:05 2	8:09 1	8:14 0
7:01 2	7:08 3	7:11 5	7:16 7	7:19 9	7:23 9	7:28 9	7:34 10	7:37 9	7:40 9	7:43 9	7:47 11	7:54 8	7:56 6	7:57 4	7:59 2	8:02 1	8:04 1	8:06 0	8:09 0	8:13 0				
7:16 12	7:23 13	7:26 17	7:31 21	7:34 21	7:38 22	7:43 22	7:49 23	7:52 26	7:55 25	7:58 26	8:02 26	8:09 20	8:11 16	8:13 12	8:14 8	8:17 5	8:19 4	8:22 3	8:24 4	8:28 4	8:32 4	8:35 3	8:39 2	8:44 0
7:46 9	7:53 10	7:56 14	8:01 17	8:04 18	8:08 19	8:13 20	8:19 22	8:22 27	8:25 27	8:28 27	8:32 29	8:39 22	8:41 15	8:43 10	8:44 6	8:47 4	8:49 4	8:52 3	8:54 4	8:58 4	9:02 4	9:05 3	9:09 3	9:14 0
8:16 8	8:23 9	8:26 12	8:31 14	8:34 15	8:38 15	8:43 15	8:49 15	8:52 17	8:55 17	8:58 17	9:02 18	9:09 14	9:11 9	9:13 6	9:14 4	9:17 4	9:19 3	9:22 2	9:24 3	9:28 3	9:32 3	9:35 2	9:39 1	9:44 0
8:46 4	8:53 5	8:56 8	9:01 9	9:04 10	9:08 10	9:13 10	9:19 11	9:22 15	9:25 16	9:28 17	9:32 17	9:39 13	9:41 10	9:43 6	9:44 4	9:47 3	9:49 3	9:52 3	9:54 4	9:58 3	10:02 2	10:05 2	10:09 0	10:14 0
9:16 4	9:23 5	9:26 6	9:31 8	9:34 9	9:38 9	9:43 9	9:49 9	9:52 10	9:55 11	9:58 11	10:02 11	10:09 9	10:11 6	10:13 4	10:14 3	10:17 2	10:19 2	10:22 2	10:24 1	10:28 1	10:32 1	10:35 1	10:39 0	10:44 0
9:46 4	9:53 5	9:56 6	10:01 7	10:04 7	10:08 7	10:13 8	10:19 8	10:22 11	10:25 11	10:28 11	10:32 12	10:39 10	10:41 8	10:43 5	10:44 4	10:47 3	10:49 2	10:52 2	10:54 3	10:58 3	11:02 2	11:05 2	11:09 1	11:14 0

LEGEND

0 - 24

25 - 30

31 +

Health and Safety Measures

- All stations have hand sanitizer for the public.
- All stations have extra masks for those who need one. Officers and Ambassadors also have extra masks if needed.
- Touchless payment for fares (Clipper) and for parking payments (Official BART App).



Personal Hand Straps

Available for \$5 at
www.railgoods.com

Can be cleaned at home.

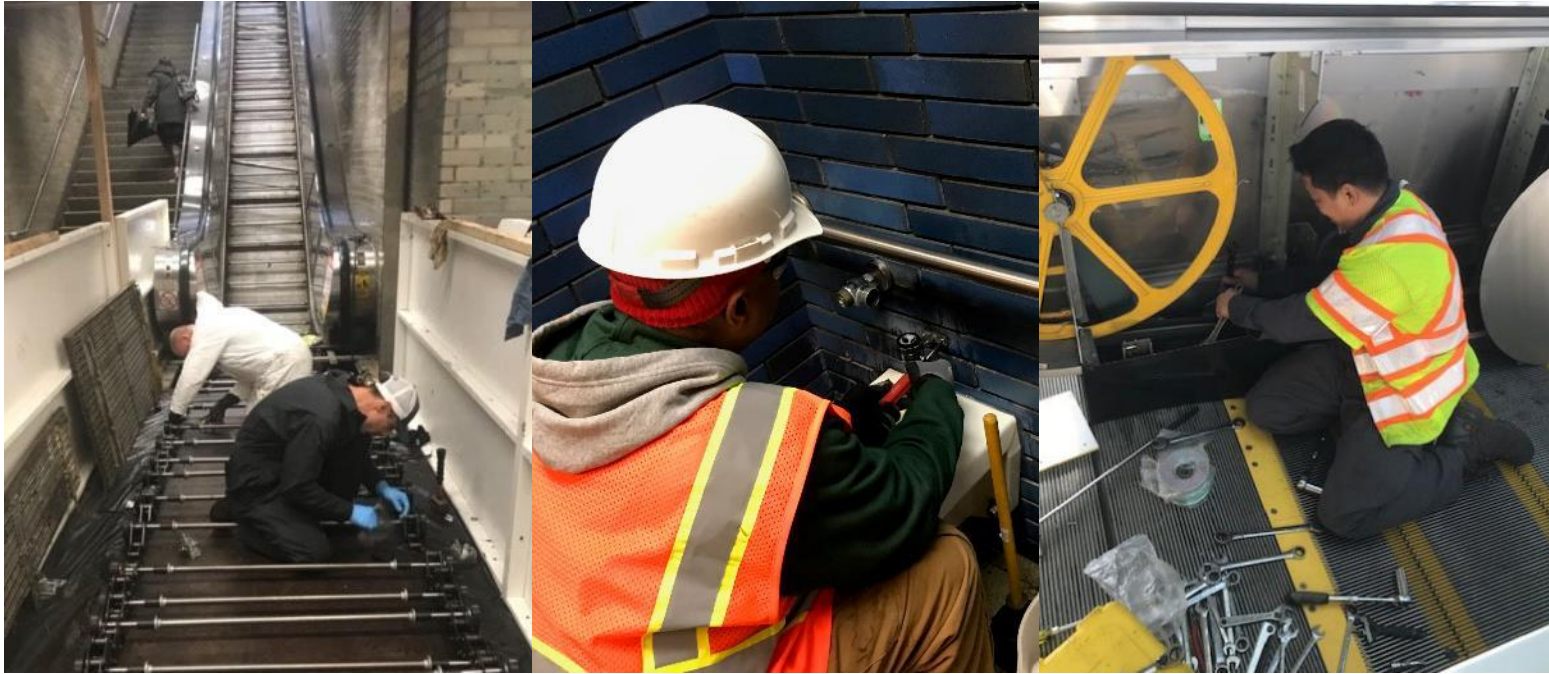


Health and Safety Measures

- The ventilation on BART cars is 80% recycled and 20% fresh.
- The recirculated air is filtered prior to being dispersed through the window frame.
- The air in each rail car is fully replaced fifty times per hour.
- BART is testing upgraded air filters and the use of ultraviolet lighting in the air ducts of train cars to kill viruses in the air flow.



Coronavirus Downtime System Improvements



Riding Together- Bay Area Healthy Transit Plan

Partners

In coordination with
Metropolitan Transportation
Commission and other Bay
Area Agencies



Moving the Bay Area

Safely

Stay Informed

- Daily website updates at www.bart.gov/covid
 - Ridership and crowding data
 - Schedule changes
 - Response and prevention efforts
 - The latest on our efforts to advocate for emergency funds
- Sign up for email alerts at www.bart.gov/signup



We're In This Together

