

Table of Contents

- 1.1 FY19-20 Ridership Performance
- 1.2 Annual Riders by Service Mode
- 1.3 Productivity - by Service Type
- 1.4 Productivity - Top 10 Routes
- 1.5 On-Time Performance
- 1.6 Passenger Loads
- 1.7 Industry Trends - Peer Comparison

[1.1] FY19-20 Ridership Performance Summary

FY19-20 Ridership [Local, Transbay]

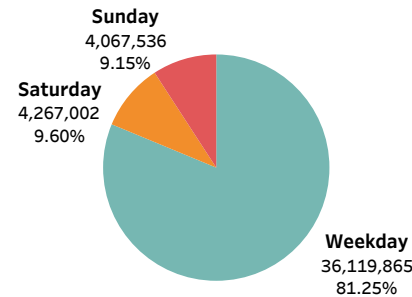
	FY18-19	FY19-20
Weekday	44,103,274	36,119,865
Saturday	4,523,955	4,267,002
Sunday	4,414,251	4,067,536
Grand Total	53,041,480	44,454,403

FY19-20 Annual Riders

44,454,403

Y-Y % Change

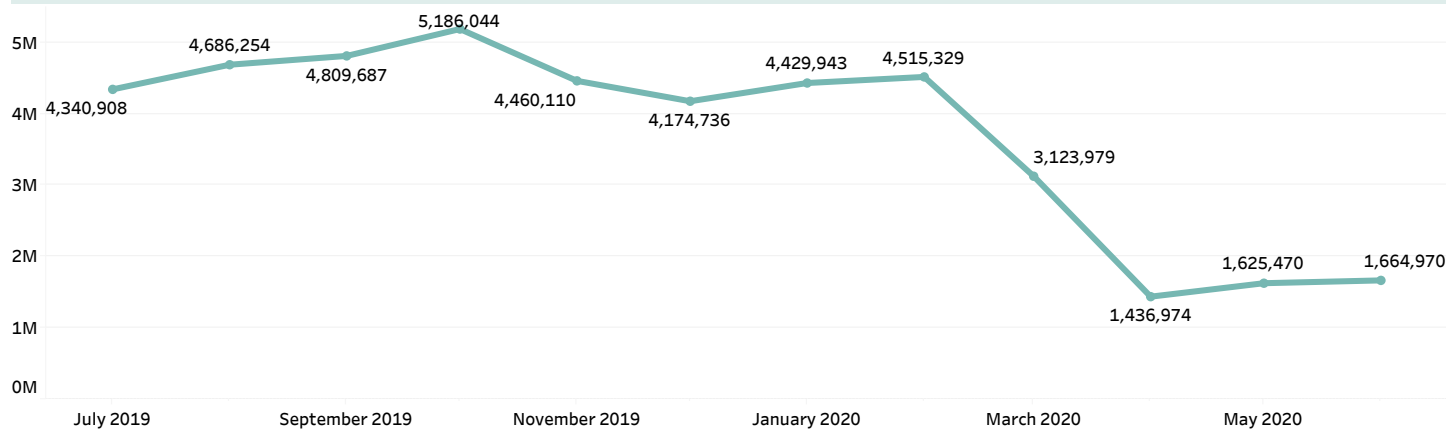
-16.2%



> 44.4 Million riders in FY19-20

> -16.2% Y-Y decline

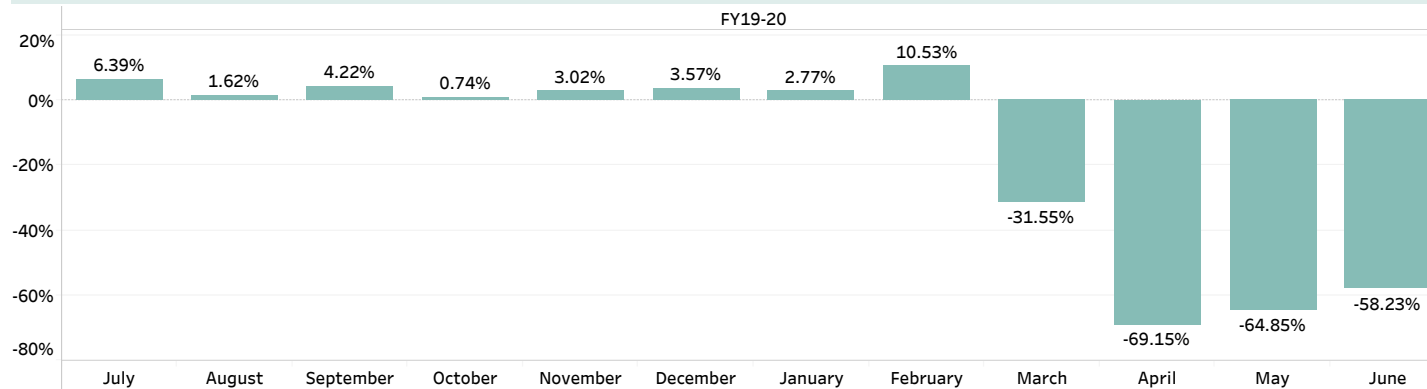
Monthly Ridership



> Monthly ridership averaged 4.1M - 5.2M riders between July-19 to Feb-20

> Ridership impacts were first impacted by Covid-19 in Mar-20 with the announcement of shelter-in-place (SIP) orders and school closures

Y-Y % Change



> Between Jul-19 to Feb-20, ridership was up overall +4% Y-Y

> Mar-20 saw a rapid ridership decline (-31.5% Y-Y) in riders resulting from Covid-19 SIP order

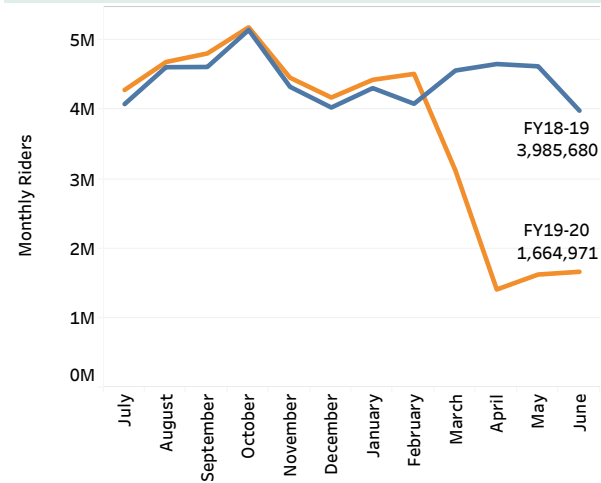
> AC Transit operated under a modified Sunday schedule between 3/31 - 8/8/20

> April-20 saw the lowest ridership (-69% Y-Y)

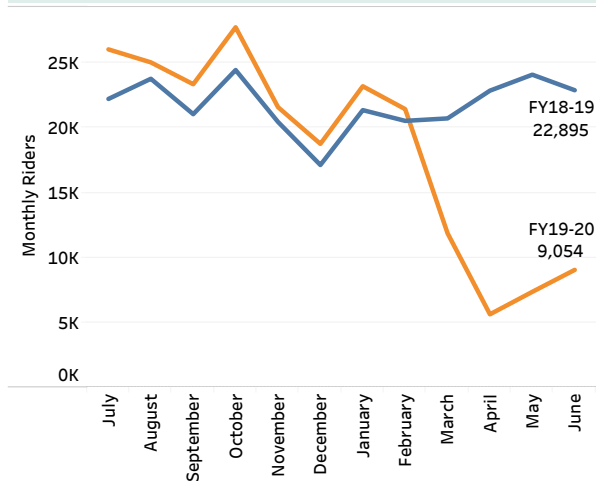
[1.2] Monthly Riders by Service Mode

FY18-19
FY19-20

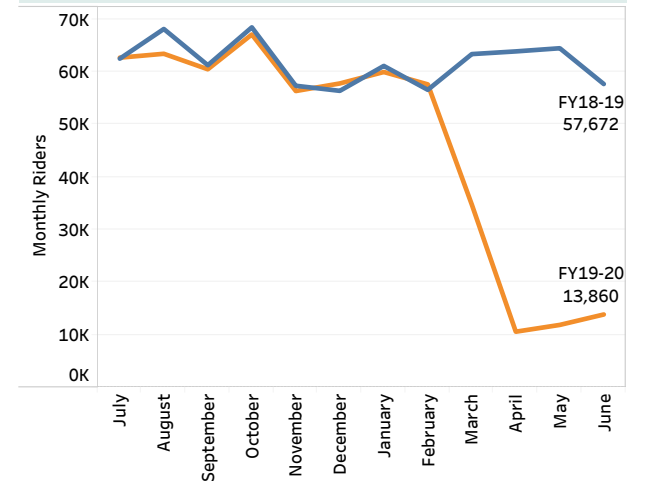
[a] Local & Transbay Service [MB-DO, CB-DO]



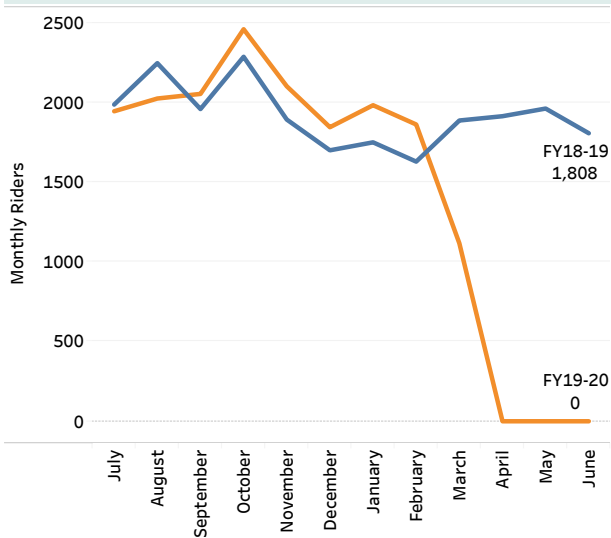
[b] Dumbarton [MB-PT]



[c] Paratransit [DR-PT]



[d] Flex Service [DR-DO] (service suspended as of 3/31/20)



Totals by Mode

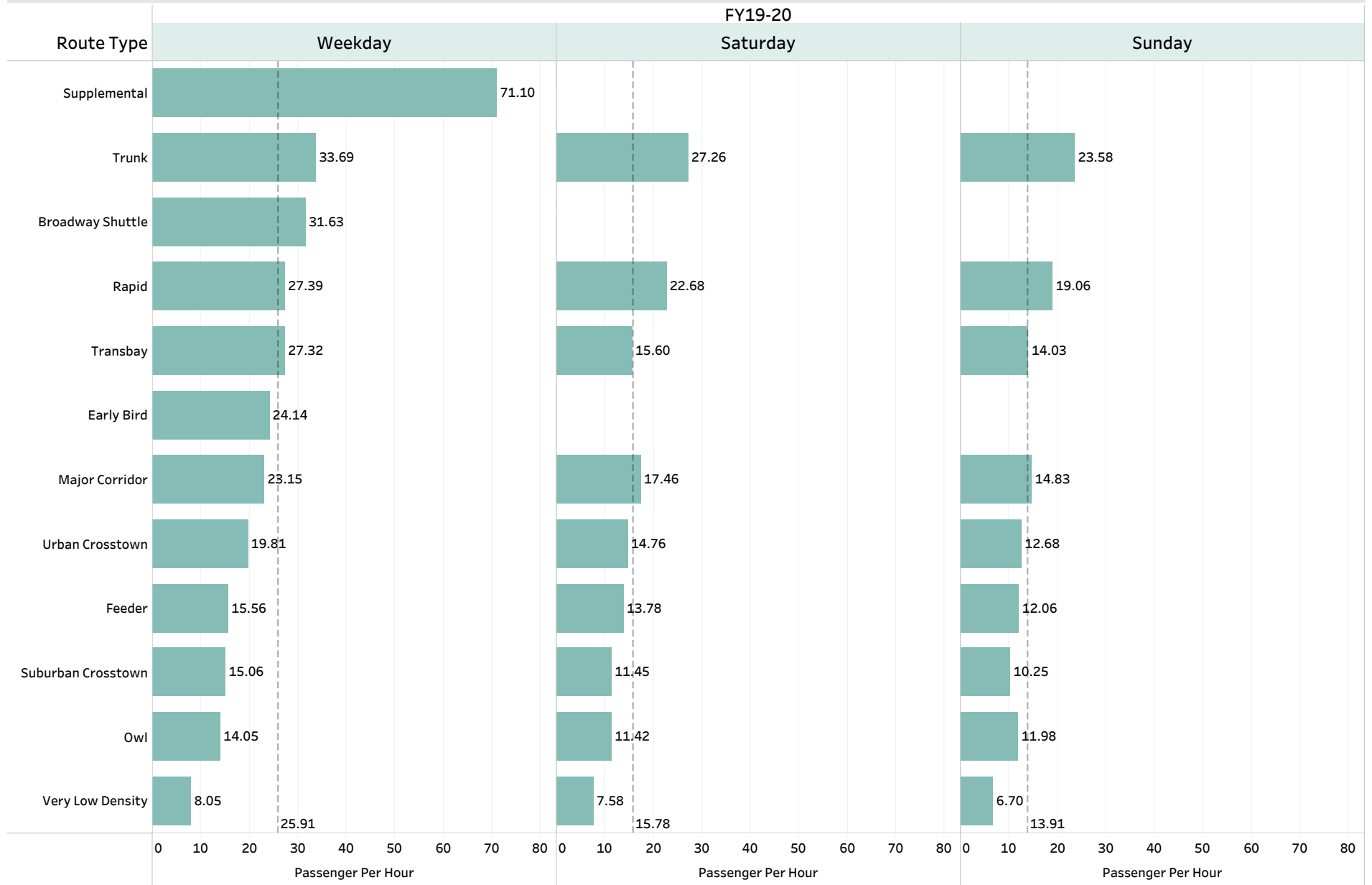
Mode	FY18-19	FY19-20	Y-Y % Chg
[a] MB-DO	50,222,832	42,142,041	-16.1%
[a] CB-DO	2,818,648	2,228,385	-20.9%
[b] MB-PT	261,560	221,107	-24.5%
[c] DR-PT	741,097	556,431	-15.5%
[d] DR-DO	23,034	17,401	-24.9%
Grand Total	54,067,171	45,165,365	-16.5%

Y-Y % Chg

> Ridership declined across all service modes with a similar pattern, dropping steeply in Mar-20 as a result of Covid-19 shelter-in-place orders

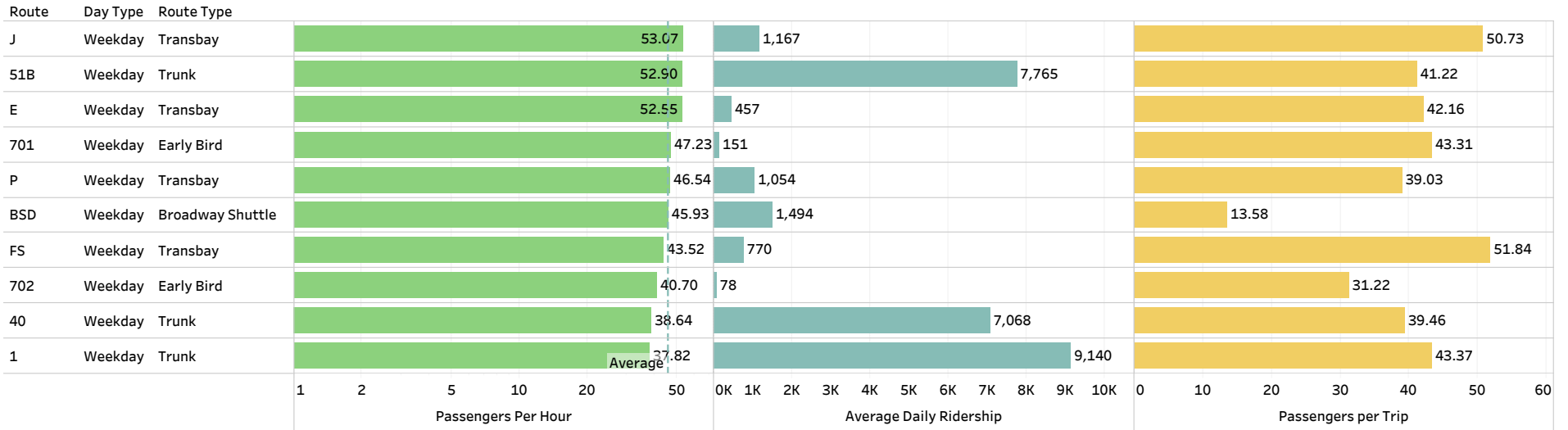
> Year-over-year declines for all service modes ranged between -15.5% to -24.9%

[1.3] Productivity by Service Type

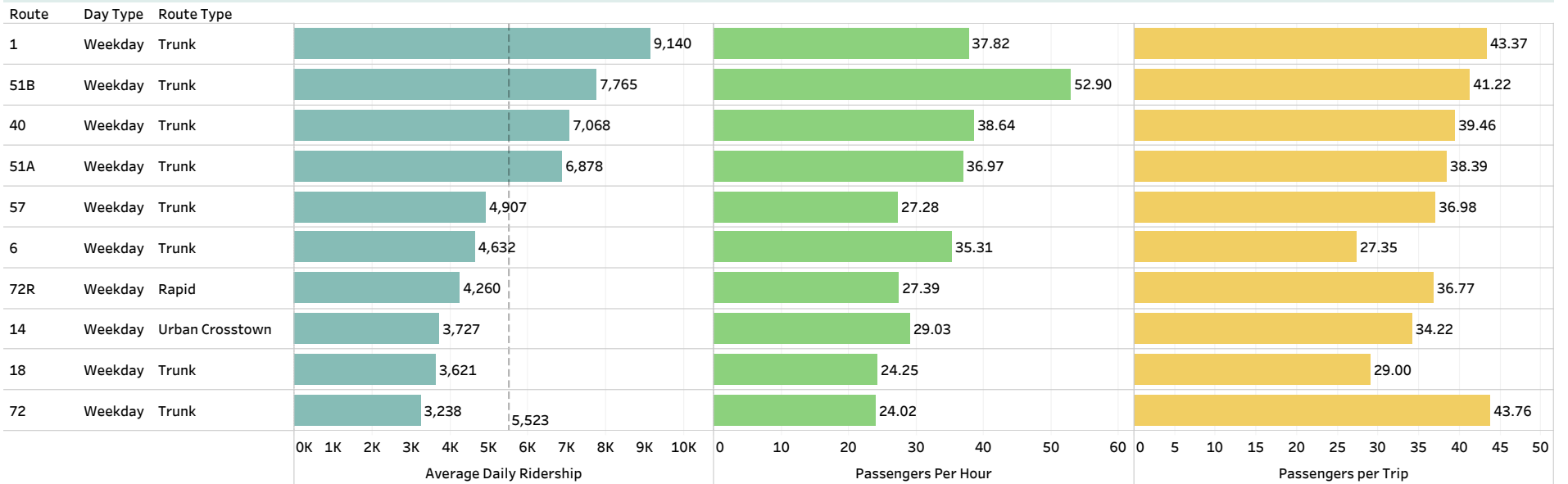


[1.4] Productivity - Top 10 Routes

Top 10 Routes - Passengers Per Hour

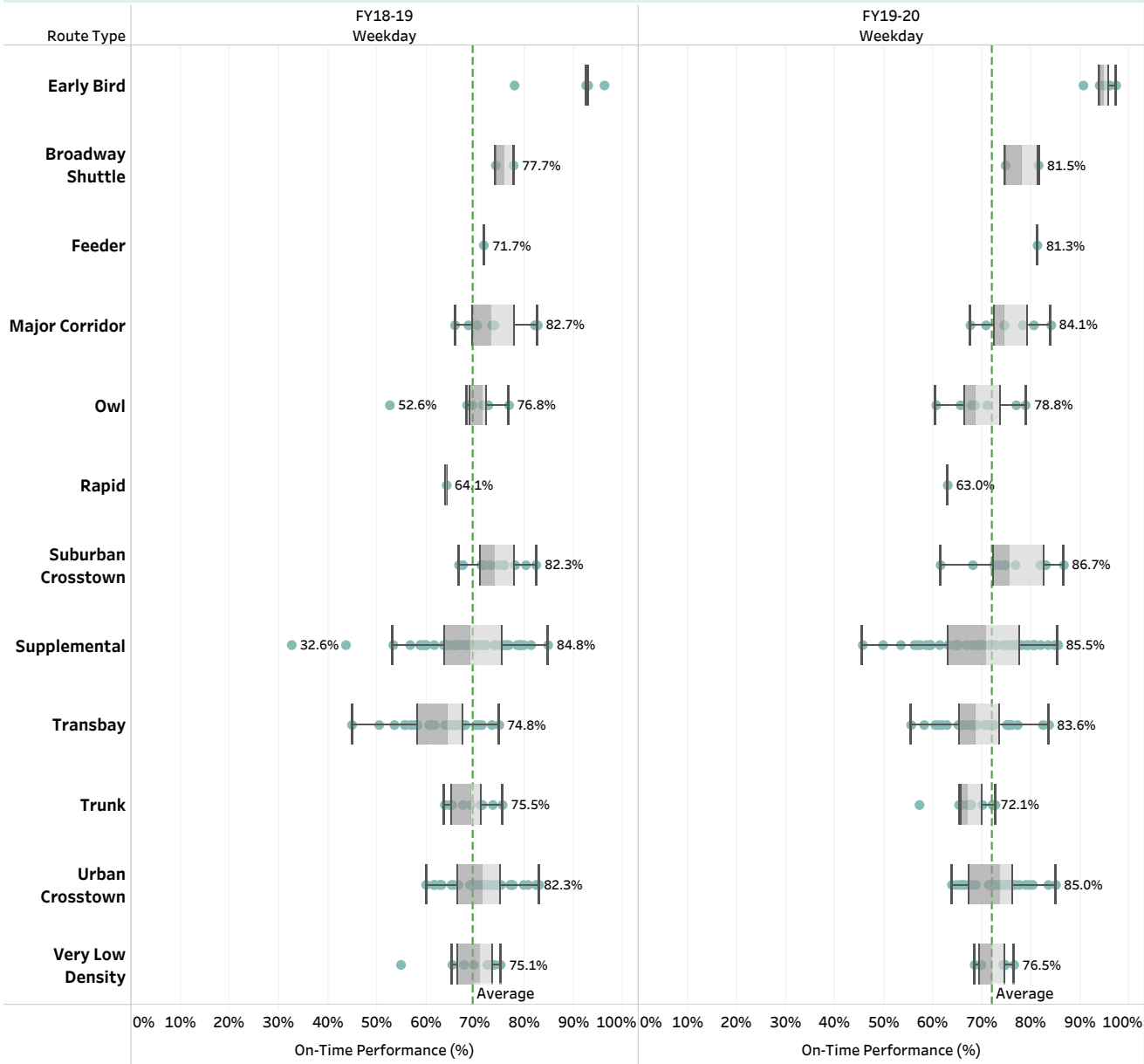


Top 10 Routes - Average Daily Ridership



[1.5] On-Time Performance

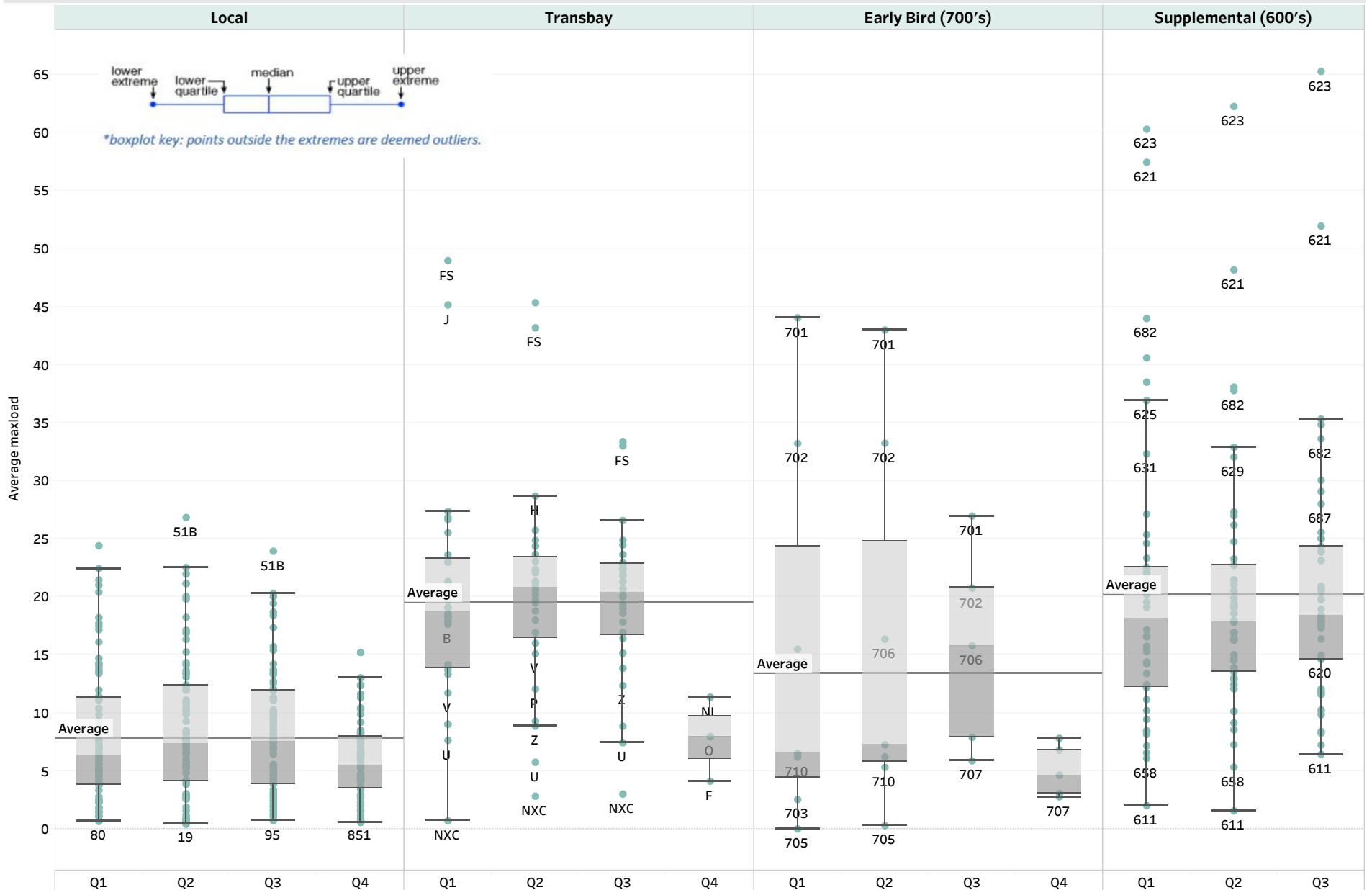
OTP by Route Type



OTP % Change

Route Type	Weekday	
	FY18-19	FY19-20
Early Bird	90.8%	94.6%
Broadway Shuttle	75.9%	78.1%
Feeder	71.7%	81.3%
Major Corridor	73.8%	75.8%
Owl	69.0%	69.9%
Rapid	64.1%	63.0%
Suburban Crosstown	74.1%	76.1%
Supplemental	68.2%	70.0%
Transbay	63.2%	69.3%
Trunk	69.1%	67.3%
Urban Crosstown	71.3%	73.1%
Very Low Density	69.0%	72.2%

[1.6] Weekday Average Maxloads



[1.7] Industry Ridership Trends - Peer Comparison (> 15M annual riders)

